

For Research Use Only

# CoraLite® Plus 488-conjugated KLF4 Polyclonal antibody



Catalog Number: CL488-11880

Featured Product

## Basic Information

Catalog Number:

CL488-11880

Size:

1000 µg/ml

Source:

Rabbit

Isotype:

IgG

Immunogen Catalog Number:

AG2480

GenBank Accession Number:

BC030811

GeneID (NCBI):

9314

UNIPROT ID:

O43474

Full Name:

Kruppel-like factor 4 (gut)

Calculated MW:

504 aa, 54 kDa

Observed MW:

50-60 kDa

Purification Method:

Antigen affinity purification

Excitation/Emission maxima  
wavelengths:

493 nm / 522 nm

## Applications

Tested Applications:

FC (Intra)

Species Specificity:

human, mouse, rat

## Background Information

The mammalian Krüppel-like transcription factor 4 (Klf4) is an evolutionarily conserved zinc finger-containing transcription factor with diverse regulatory functions in cell growth, proliferation, differentiation and embryogenesis. It also plays a significant role in the process of tumorigenesis. Klf4 is one of the key transcription factors that have been used to reprogram mouse and human fibroblasts to a pluripotent state also called induced pluripotent stem (iPS) cells. Affinity purified rabbit anti- Klf4 is for the detection of Klf4 transgene expression in the process of reprogramming. There are two isoforms of KLF4 (PMID: 15561714), with MW range from 50 to 60 kDa, and major band is 55 kDa. KLF4 protein can be ubiquitin modified.

## Storage

Storage:

Store at -20°C. Avoid exposure to light. Stable for one year after shipment.

Storage Buffer:

PBS with 50% Glycerol, 0.05% Proclin300, 0.5% BSA, pH 7.3.

Aliquoting is unnecessary for -20°C storage

For technical support and original validation data for this product please contact:

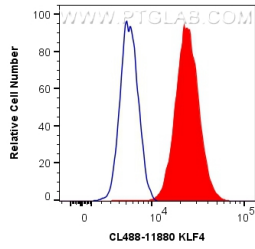
T: 4006900926

E: [Proteintech-CN@ptglab.com](mailto:Proteintech-CN@ptglab.com)

W: [ptgcn.com](http://ptgcn.com)

This product is exclusively available under Proteintech Group brand and is not available to purchase from any other manufacturer.

## Selected Validation Data



1X10<sup>6</sup> HeLa cells were intracellularly stained with 0.8 ug CoraLite® Plus 488 Anti-Human KLF4 (CL488-11880) (red), or 0.8 ug Isotype Control. Cells were fixed and permeabilized with Transcription Factor Staining Buffer Kit (PF00011).