

For Research Use Only

CoraLite® Plus 488-conjugated Syntaxin 6 Polyclonal antibody



Catalog Number: CL488-10841

Featured Product

Basic Information

Catalog Number:

CL488-10841

Size:

1000 µg/ml

Source:

Rabbit

Isotype:

IgG

Immunogen Catalog Number:

AG1284

GenBank Accession Number:

BC009944

GeneID (NCBI):

10228

UNIPROT ID:

O43752

Full Name:

syntaxin 6

Calculated MW:

29 kDa

Observed MW:

32 kDa

Purification Method:

Antigen affinity purification

Recommended Dilutions:

IF 1:50-1:500

Excitation/Emission maxima
wavelengths:

493 nm / 522 nm

Applications

Tested Applications:

FC (Intra), IF/ICC

Species Specificity:

human, mouse, rat

Positive Controls:

IF : PC-12 cells,

Background Information

Syntaxin-6 (STX6) is a SNARE protein located in the trans-Golgi network (TGN) and endosomes. It associates with a variety of SNARE proteins and is involved in intracellular vesicle trafficking. STX6 is required for sorting proteins from endosomes toward either the TGN or lysosomes.

Storage

Storage:

Store at -20°C. Avoid exposure to light.

Storage Buffer:

PBS with 50% Glycerol, 0.05% Proclin300, 0.5% BSA, pH 7.3.

Aliquoting is unnecessary for -20°C storage

For technical support and original validation data for this product please contact:

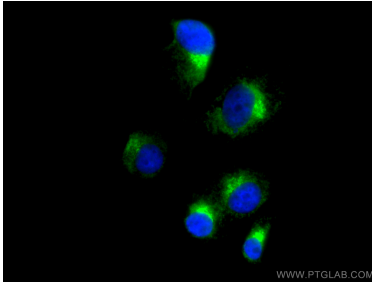
T: 4006900926

E: Proteintech-CN@ptglab.com

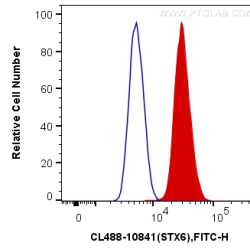
W: ptgcn.com

This product is exclusively available under Proteintech Group brand and is not available to purchase from any other manufacturer.

Selected Validation Data



Immunofluorescent analysis of (4% PFA) fixed PC-12 cells using CoraLite® Plus 488 Syntaxin 6 antibody (CL488-10841) at dilution of 1:100.



1X10⁶ PC-12 cells were intracellularly stained with 0.4 ug CoraLite® Plus 488 Anti-Human Syntaxin 6 (CL488-10841) (red), or 0.4 ug Control Antibody. Cells were fixed with 4% PFA and permeabilized with Flow Cytometry Perm Buffer (PF00011-C).