

# Biotin-conjugated Alpha Tubulin Monoclonal antibody

Catalog Number: Biotin-66031

1 Publications

## Basic Information

## Catalog Number:

Biotin-66031

## Size:

1000 µg/ml

## Source:

Mouse

## Isotype:

IgG2b

## Immunogen Catalog Number:

AG18034

## GenBank Accession Number:

BC009314

## GeneID (NCBI):

10376

## UNIPROT ID:

P68363

## Full Name:

tubulin, alpha 1b

## Calculated MW:

50 kDa

## Purification Method:

Protein A purification

## CloneNo.:

1E4C11

## Recommended Dilutions:

IHC 1:50-1:500

## Applications

## Tested Applications:

IHC

## Cited Applications:

WB

## Species Specificity:

human, mouse, rat, Canine

## Cited Species:

mouse

**Note-IHC: suggested antigen retrieval with TE buffer pH 9.0; (\*) Alternatively, antigen retrieval may be performed with citrate buffer pH 6.0**

## Positive Controls:

IHC : human liver cancer tissue,

## Background Information

There are five tubulins in human cells: alpha, beta, gamma, delta, and epsilon. Tubulins are conserved across species. They form heterodimers, which multimerize to form a microtubule filament. An alpha and beta tubulin heterodimer is the basic structural unit of microtubules. The heterodimer does not come apart once formed. The alpha and beta tubulins, which are each about 55 kDa MW, are homologous but not identical. Alpha tubulin is useful for scientists across fields as an internal control due to its high, ubiquitous expression pattern. Tubulin expression may vary according to resistance to antimicrobial and antimitotic drugs. This antibody specifically recognizes Tubulin Alpha.

## Notable Publications

Author	Pubmed ID	Journal	Application
Hong Zhang	34153292	Biochem Pharmacol	WB

## Storage

## Storage:

Store at -20°C. Avoid exposure to light. Stable for one year after shipment.

## Storage Buffer:

PBS with 50% Glycerol, 0.05% Proclin300, 0.5% BSA, pH 7.3.

Aliquoting is unnecessary for -20°C storage

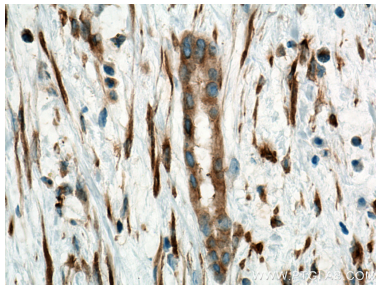
For technical support and original validation data for this product please contact:

T: 4006900926

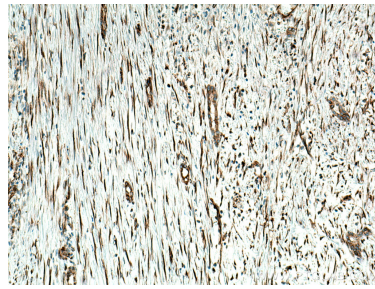
E: [Proteintech-CN@ptglab.com](mailto:Proteintech-CN@ptglab.com)W: [ptgcn.com](http://ptgcn.com)

This product is exclusively available under Proteintech Group brand and is not available to purchase from any other manufacturer.

## Selected Validation Data



Immunohistochemical analysis of paraffin-embedded human liver cancer tissue slide using Biotin-66031 (alpha Tubulin antibody) at dilution of 1:200 (under 40x lens). Heat mediated antigen retrieval with Tris-EDTA buffer (pH 9.0).



Immunohistochemical analysis of paraffin-embedded human liver cancer tissue slide using Biotin-66031 (alpha Tubulin antibody) at dilution of 1:200 (under 10x lens). Heat mediated antigen retrieval with Tris-EDTA buffer (pH 9.0).