

For Research Use Only

WT1 Recombinant antibody

Catalog Number: 82525-1-RR



Basic Information

Catalog Number: 82525-1-RR	GenBank Accession Number: BC032861	Purification Method: Protein A purification
Size: 500 µg/ml	GeneID (NCBI): 7490	CloneNo.: 2J13
Source: Rabbit	UNIPROT ID: P19544	Recommended Dilutions: WB 1:2000-1:10000 IHC 1:1000-1:4000
Isotype: IgG	Full Name: Wilms tumor 1	
Immunogen Catalog Number: AG19541	Calculated MW: 449 aa, 49 kDa, 57 kDa	
	Observed MW: 52-55 kDa	

Applications

Tested Applications: IHC, WB, ELISA	Positive Controls: WB : K-562 cells, MCF-7 cells
Species Specificity: Human	IHC : rat testis tissue,

Note-IHC: suggested antigen retrieval with TE buffer pH 9.0; (*) Alternatively, antigen retrieval may be performed with citrate buffer pH 6.0

Background Information

The WT1 gene encodes a zinc finger DNA-binding protein that acts as a transcriptional activator or repressor depending on the cellular or chromosomal context, and it is required for the normal formation of the genitourinary system and mesothelial tissues. WT1 inhibits apoptosis through p53 and Bcl-2 and also inhibits the differentiation of leukemic cells. The function of WT1 may be isoform-specific: isoforms lacking the KTS motif may act as transcription factors. Isoforms containing the KTS motif may bind mRNA and play a role in mRNA metabolism or splicing. Isoform 1 has a lower affinity for DNA and can bind RNA. WT1 exists some isoforms with a range of molecular weight is 33-50 kDa.

Storage

Storage:
Store at -20°C. Stable for one year after shipment.
Storage Buffer:
PBS with 0.02% sodium azide and 50% glycerol pH 7.3.
Aliquoting is unnecessary for -20°C storage

For technical support and original validation data for this product please contact:

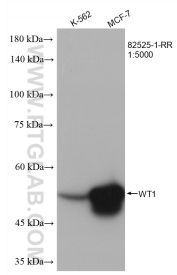
T: 4006900926

E: Proteintech-CN@ptglab.com

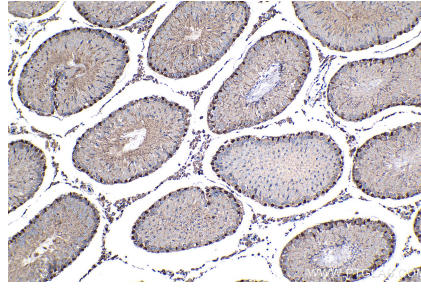
W: ptgcn.com

This product is exclusively available under Proteintech Group brand and is not available to purchase from any other manufacturer.

Selected Validation Data



Various lysates were subjected to SDS PAGE followed by western blot with 82525-1-RR (WT1 antibody) at dilution of 1:5000 incubated at room temperature for 1.5 hours.



Immunohistochemical analysis of paraffin-embedded rat testis tissue slide using 82525-1-RR (WT1 antibody) at dilution of 1:2000 (under 10x lens). Heat mediated antigen retrieval with Tris-EDTA buffer (pH 9.0).