

For Research Use Only

Phospho-BCL2 (Ser70) Recombinant antibody



Catalog Number: 80771-2-RR

Basic Information

Catalog Number: 80771-2-RR	GenBank Accession Number: BC027258	Purification Method: Protein A purification
Size: 300 µg/ml	GeneID (NCBI): 596	CloneNo.: 230061A8
Source: Rabbit	UNIPROT ID: P10415	Recommended Dilutions: WB 1:2000-1:10000
Isotype: IgG	Full Name: B-cell CLL/lymphoma 2	
	Calculated MW: 26 kDa	
	Observed MW: 26 kDa	

Applications

Tested Applications: WB, ELISA	Positive Controls: WB : Jurkat cells,
Species Specificity: Human	

Background Information

BCL2 belongs to the Bcl-2 family. The anti-apoptotic protein BCL2 can bind to the pro-apoptotic protein BAX or BAK1 to form heterodimers that modulate apoptosis. BCL2 phosphorylation at Ser70 enhances binding to BAX and BAD and is essential for its anti-apoptotic activity. Conversely, BCL2 also regulates autophagy via interaction with BECN1/Beclin 1; moreover, BCL2 phosphorylation including at Ser70 leads to its dissociation from BECN1 and induction of autophagy. These findings suggest that BCL2 regulates the balance between apoptosis and autophagy. (PMID: 29433359)

Storage

Storage:
Store at -20°C. Stable for one year after shipment.
Storage Buffer:
PBS with 0.02% sodium azide and 50% glycerol pH 7.3.
Aliquoting is unnecessary for -20°C storage

For technical support and original validation data for this product please contact:

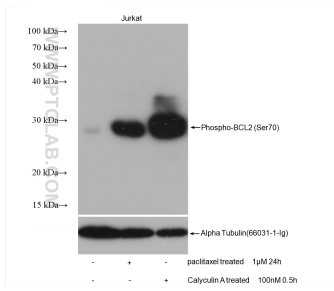
T: 4006900926

E: Proteintech-CN@ptglab.com

W: ptgcn.com

This product is exclusively available under Proteintech Group brand and is not available to purchase from any other manufacturer.

Selected Validation Data



Non-treated Jurkat cells, paclitaxel treated Jurkat cells, non-treated Jurkat cells and Calyculin A treated Jurkat cells were subjected to SDS PAGE followed by western blot with 80771-2-RR (Phospho-BCL2 (Ser70) antibody) at dilution of 1:5000 incubated at room temperature for 1.5 hours. The membrane was stripped and re-blotted with Alpha Tubulin antibody as loading control.