

For Research Use Only

# Connexin 43 Recombinant antibody, PBS Only

Catalog Number: 80543-1-PBS



## Basic Information

Catalog Number: 80543-1-PBS	GenBank Accession Number: BC026329	Purification Method: Protein A purification
Concentration: 1mg/ml	GeneID (NCBI): 2697	CloneNo.: 306
Source: Rabbit	UNIPROT ID: P17302	
Isotype: IgG	Full Name: gap junction protein, alpha 1, 43kDa	
Immunogen Catalog Number: AG25533	Calculated MW: 43 kDa	
	Observed MW: 43 kDa	

## Applications

**Tested Applications:**  
WB, IHC, IF/ICC, IF-P, Indirect ELISA

**Species Specificity:**  
human, mouse, rat, pig

## Background Information

Connexin 43 (Cx43, also known as gap junction alpha-1), a member of connexin family, plays essential roles in gap junction communication that facilitates direct communication among adjacent cells (PMID: 12270943). Usually, six connexin proteins oligomerize into a hemi-channel or connexon during intercellular channel formation (PMID: 12270943). Mutations of Connexin 43 may cause a series of diseases such as oculodentodigital dysplasia (ODDD), syndactyly 3 (SDTY3), hypoplastic left heart syndrome 1 (HLHS1) and so on (PMID: 18161618, 1472936, 1147490).

## Storage

**Storage:**  
Store at -80°C.

**The product is shipped with ice packs. Upon receipt, store it immediately at -80°C**

**Storage Buffer:**  
PBS only, pH7.3

For technical support and original validation data for this product please contact:

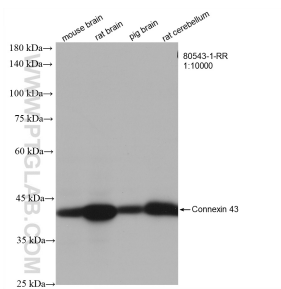
T: 4006900926

E: Proteintech-CN@ptglab.com

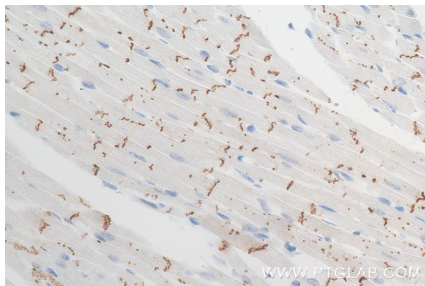
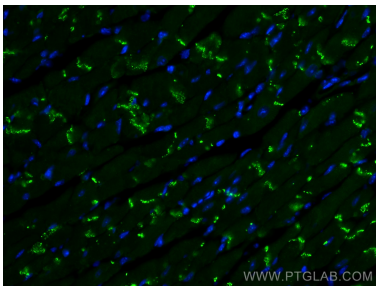
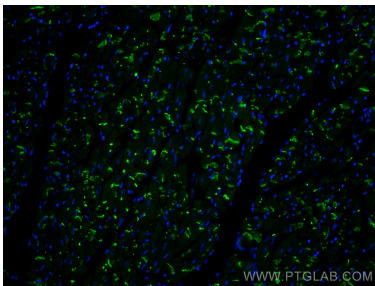
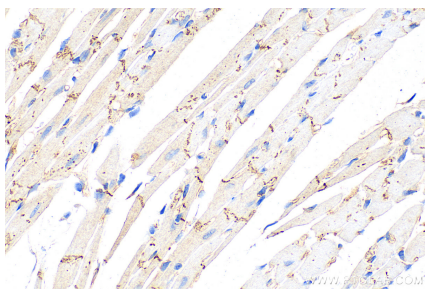
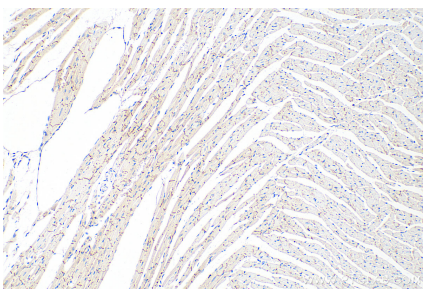
W: ptgcn.com

**This product is exclusively available under Proteintech Group brand and is not available to purchase from any other manufacturer.**

## Selected Validation Data



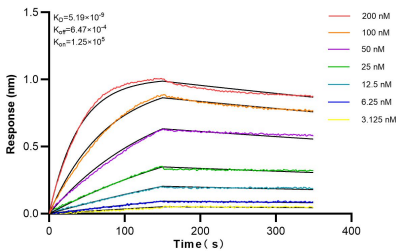
Various lysates were subjected to SDS PAGE followed by western blot with 80543-1-RR (Connexin 43 antibody) at dilution of 1:10000 incubated at room temperature for 1.5 hours. This data was developed using the same antibody clone with 80543-1-PBS in a different storage buffer formulation.



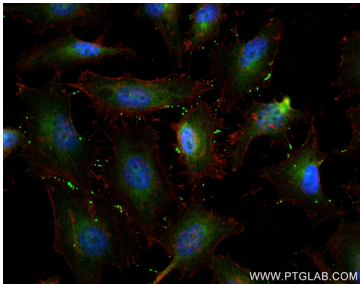
Immunofluorescent analysis of (4% PFA) fixed mouse heart tissue using Connexin 43 antibody (80543-1-RR, Clone: 3O6) at dilution of 1:200 and CoraLite®488-Conjugated AffiniPure Goat Anti-Rabbit IgG(H+L). This data was developed using the same antibody clone with 80543-1-PBS in a different storage buffer formulation.

Immunofluorescent analysis of (4% PFA) fixed mouse heart tissue using Connexin 43 antibody (80543-1-RR, Clone: 3O6) at dilution of 1:200 and CoraLite®488-Conjugated AffiniPure Goat Anti-Rabbit IgG(H+L). This data was developed using the same antibody clone with 80543-1-PBS in a different storage buffer formulation.

Immunohistochemical analysis of paraffin-embedded mouse heart tissue slide using 80543-1-RR (Connexin 43 antibody) at dilution of 1:2000 (under 40x lens). Heat mediated antigen retrieval with Tris-EDTA buffer (pH 9.0). This data was developed using the same antibody clone with 80543-1-PBS in a different storage buffer formulation.



Bioluminescence resonance energy transfer (BRET) kinetic assays of 80543-1-RR against Human Connexin 43 were performed. The affinity constant is 5.19 nM.



Immunofluorescent analysis of (4% PFA) fixed HeLa cells using Connexin 43 antibody (80543-1-RR, Clone: 3O6) at dilution of 1:250 and CoraLite®488-Conjugated AffiniPure Goat Anti-Rabbit IgG(H+L) (SA00013-2), CL594-Phalloidin (red). This data was developed using the same antibody clone with 80543-1-PBS in a different storage buffer formulation.