

For Research Use Only

BDH2 Monoclonal antibody

Catalog Number: 68279-1-Ig **Featured Product**



Basic Information

Catalog Number: 68279-1-Ig	GenBank Accession Number: BC095414	Purification Method: Protein G purification
Size: 1000 µg/ml	GeneID (NCBI): 56898	CloneNo.: 1B6H5
Source: Mouse	UNIPROT ID: Q9BUT1	Recommended Dilutions: WB 1:5000-1:50000 IF 1:200-1:800
Isotype: IgG1	Full Name: 3-hydroxybutyrate dehydrogenase, type 2	
Immunogen Catalog Number: AG26108	Observed MW: 27 kDa	

Applications

Tested Applications: IF/ICC, WB, ELISA	Positive Controls:
Species Specificity: Human	WB: BxPC-3 cells, HeLa cells, HEK-293 cells, HepG2 cells, Jurkat cells IF: HepG2 cells,

Background Information

Cytosolic type 2-hydroxybutyrate dehydrogenase, BDH2, originally named DHRS6, plays a physiological role in the cytosolic utilization of ketone bodies, which can subsequently enter mitochondria and the tricarboxylic acid cycle (PMID: 16380372). Moreover, BDH2 catalyzes the production of 2, 3-DHBA during enterobactin biosynthesis and participates in 24p3 (LCN2)-mediated iron transport and apoptosis (PMID: 23150981). It has 3 isoforms with molecular weights of 27, 19, and 16 kDa.

Storage

Storage:
Store at -20°C. Stable for one year after shipment.
Storage Buffer:
PBS with 0.02% sodium azide and 50% glycerol pH 7.3.
Aliquoting is unnecessary for -20°C storage

For technical support and original validation data for this product please contact:

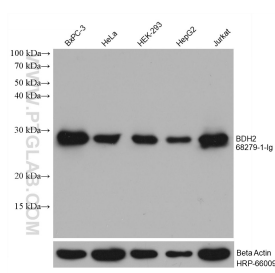
T: 4006900926

E: Proteintech-CN@ptglab.com

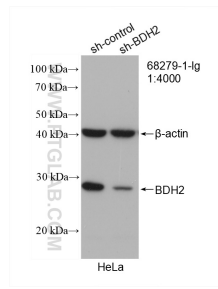
W: ptgcn.com

This product is exclusively available under Proteintech Group brand and is not available to purchase from any other manufacturer.

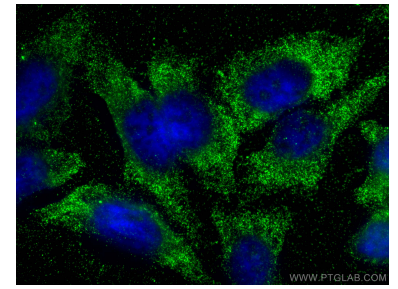
Selected Validation Data



Various lysates were subjected to SDS PAGE followed by western blot with 68279-1-Ig (BDH2 antibody) at dilution of 1:10000 and incubated at room temperature for 1.5 hours. The membrane was stripped and reblotted with HRP-conjugated Beta Actin Monoclonal antibody (HRP-66009) as loading control.



WB result of BDH2 antibody (68279-1-Ig: 1:4000; incubated at room temperature for 1.5 hours) with sh-Control and sh-BDH2 transfected HeLa cells.



Immunofluorescent analysis of (-20°C Ethanol) fixed HepG2 cells using BDH2 antibody (68279-1-Ig, Clone: 1B6H5) at dilution of 1:400 and CoraLite®488-Conjugated AffiniPure Goat Anti-Mouse IgG(H+L).