

For Research Use Only

# IMMT Monoclonal antibody

Catalog Number: 68226-1-Ig **Featured Product**



## Basic Information

|  |   |  |
|--|---|--|
| <b>Catalog Number:</b><br>68226-1-Ig       | <b>GenBank Accession Number:</b><br>BC002412                              | <b>Purification Method:</b><br>Protein A purification                                      |
| <b>Size:</b><br>500 µg/ml                  | <b>GeneID (NCBI):</b><br>10989  | <b>CloneNo.:</b><br>2D2E8  |
| <b>Source:</b><br>Mouse                    | <b>UNIPROT ID:</b><br>Q16891  | <b>Recommended Dilutions:</b><br>WB 1:5000-1:50000<br>IHC 1:1000-1:4000<br>IF 1:400-1:1600 |
| <b>Isotype:</b><br>IgG2b                   | <b>Full Name:</b><br>inner membrane protein,<br>mitochondrial (mitofilin) |  |
| <b>Immunogen Catalog Number:</b><br>AG0102 | <b>Calculated MW:</b><br>90 kDa   |  |
|  | <b>Observed MW:</b><br>90 kDa   |  |

## Applications

|  |  |
|--|--|
| <b>Tested Applications:</b><br>FC, IF/ICC, IHC, WB, ELISA  | <b>Positive Controls:</b><br>WB : HeLa cells, HepG2 cells<br>IHC : mouse heart tissue,<br>IF : HeLa cells, |
| <b>Species Specificity:</b><br>Human, Rat, Mouse   |  |
| <b>Note-IHC: suggested antigen retrieval with TE buffer pH 9.0; (*) Alternatively, antigen retrieval may be performed with citrate buffer pH 6.0</b> |  |

## Background Information

IMMT (also known as mitofilin) is an inner mitochondrial membrane protein that is preferentially expressed in heart tissue and is commonly used as the marker for mitochondria. Mitofilin is known to be a critical organizer of mitochondrial cristae morphology and is indispensable for normal mitochondrial function. Three isoforms of mitofilin exist due to the alternative splicing. All three proteins of 87kD, 89kD and 80kD can be detected in immunoblot analysis with this antibody.

## Storage

**Storage:**  
Store at -20°C. Stable for one year after shipment.  
**Storage Buffer:**  
PBS with 0.02% sodium azide and 50% glycerol pH 7.3.  
Aliquoting is unnecessary for -20°C storage

For technical support and original validation data for this product please contact:

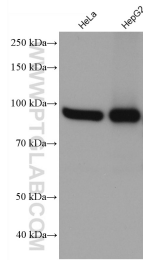
T: 4006900926

E: Proteintech-CN@ptglab.com

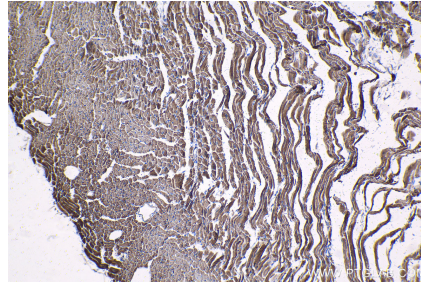
W: ptgcn.com

**This product is exclusively available under Proteintech Group brand and is not available to purchase from any other manufacturer.**

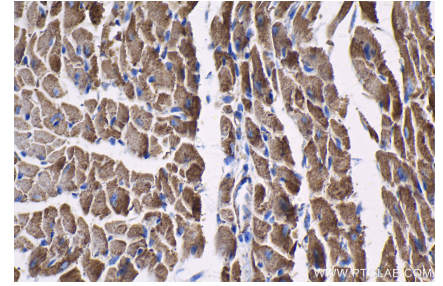
## Selected Validation Data



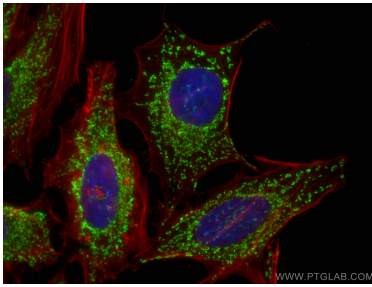
Various lysates were subjected to SDS PAGE followed by western blot with 68226-1-Ig (IMMT antibody) at dilution of 1:10000 incubated at room temperature for 1.5 hours.



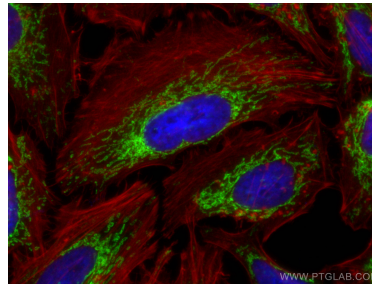
Immunohistochemical analysis of paraffin-embedded mouse heart tissue slide using 68226-1-Ig (IMMT antibody) at dilution of 1:2000 (under 10x lens). Heat mediated antigen retrieval with Tris-EDTA buffer (pH 9.0).



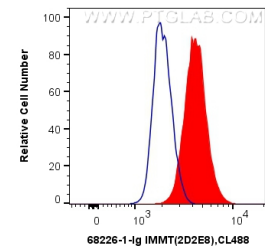
Immunohistochemical analysis of paraffin-embedded mouse heart tissue slide using 68226-1-Ig (IMMT antibody) at dilution of 1:2000 (under 40x lens). Heat mediated antigen retrieval with Tris-EDTA buffer (pH 9.0).



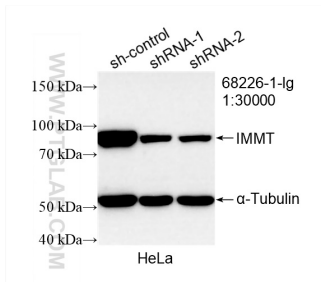
Immunofluorescent analysis of (4% PFA) fixed HeLa cells using IMMT antibody (68226-1-Ig, Clone: 2D2E8) at dilution of 1:800 and CoraLite@488-Conjugated AffiniPure Goat Anti-Mouse IgG(H+L), CL594-Phalloidin (red).



Immunofluorescent analysis of (4% PFA) fixed HEK-293 cells using IMMT antibody (68226-1-Ig, Clone: 2D2E8) at dilution of 1:800 and CoraLite@488-Conjugated AffiniPure Goat Anti-Mouse IgG(H+L), CL594-Phalloidin (red).



$1 \times 10^6$  HEK-293 cells were intracellularly stained with 0.4 ug Anti-Human IMMT (68226-1-Ig, Clone:2D2E8) and CoraLite@488-Conjugated AffiniPure Goat Anti-Mouse IgG(H+L) at dilution 1:1000 (red), or 0.4 ug Mouse IgG2b Isotype Control (66360-3-Ig, Clone: K11B8C4B5) (blue). Cells were fixed with 4% PFA and permeabilized with Flow Cytometry Perm Buffer (PF00011-C).



WB result of IMMT antibody (68226-1-Ig; 1:30000; incubated at room temperature for 1.5 hours) with sh-Control and sh-IMMT transfected HeLa cells.