

For Research Use Only

# CA12 Monoclonal antibody

Catalog Number: 68224-1-Ig



## Basic Information

<b>Catalog Number:</b> 68224-1-Ig	<b>GenBank Accession Number:</b> BC000278	<b>Purification Method:</b> Protein G purification
<b>Size:</b> 1000 µg/ml	<b>GeneID (NCBI):</b> 771	<b>CloneNo.:</b> 3E1D8
<b>Source:</b> Mouse	<b>UNIPROT ID:</b> O43570	<b>Recommended Dilutions:</b> WB 1:5000-1:50000 IF 1:1000-1:4000
<b>Isotype:</b> IgG1	<b>Full Name:</b> carbonic anhydrase XII	
<b>Immunogen Catalog Number:</b> AG7235	<b>Calculated MW:</b> 39 kDa	
	<b>Observed MW:</b> 38-45 kDa	

## Applications

<b>Tested Applications:</b> WB, IF, ICC, ELISA	<b>Positive Controls:</b>
<b>Species Specificity:</b> Human	<b>WB:</b> A549 cells, LNCaP cells, MCF-7 cells, HeLa cells <b>IF:</b> A549 cells,

## Background Information

CA12 belongs to the alpha-carbonic anhydrase family. It reversible hydration of carbon dioxide. Overexpression of the zinc enzyme CA12 is observed in certain human cancers. The structure reveals a prototypical CA fold; however, two CA12 domains associate to form an isologous dimer, an observation that is confirmed by studies of the enzyme in solution.

## Storage

**Storage:**  
Store at -20°C. Stable for one year after shipment.  
**Storage Buffer:**  
PBS with 0.02% sodium azide and 50% glycerol pH 7.3.  
Aliquoting is unnecessary for -20°C storage

For technical support and original validation data for this product please contact:

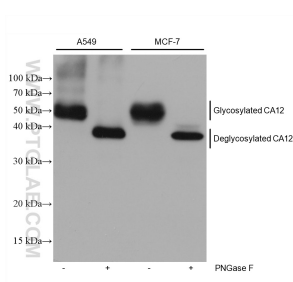
T: 4006900926

E: [Proteintech-CN@ptglab.com](mailto:Proteintech-CN@ptglab.com)

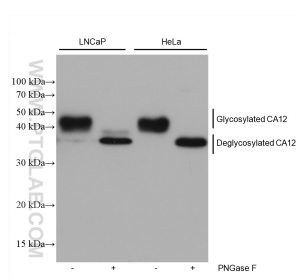
W: [ptgcn.com](http://ptgcn.com)

This product is exclusively available under Proteintech Group brand and is not available to purchase from any other manufacturer.

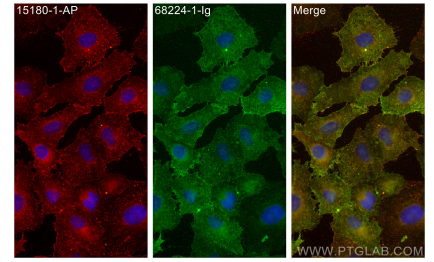
## Selected Validation Data



Various lysates were subjected to SDS PAGE followed by western blot with 68224-1-Ig (CA12 antibody) at dilution of 1:10000 incubated at room temperature for 1.5 hours.



Various lysates were subjected to SDS PAGE followed by western blot with 68224-1-Ig (CA12 antibody) at dilution of 1:10000 incubated at room temperature for 1.5 hours.



Immunofluorescent analysis of (-20°C Methanol) fixed A549 cells using CA12 antibody (68224-1-Ig, Clone: 3E1D8) at dilution of 1:2000 and CoraLite®488-Conjugated AffiniPure Goat Anti-Mouse IgG(H+L).