

ETFA Monoclonal antibody

Catalog Number: 67661-1-Ig

Basic Information

Catalog Number: 67661-1-Ig	GenBank Accession Number: BC015526	Purification Method: Protein A purification
Size: 1000 µg/ml	GeneID (NCBI): 2108	CloneNo.: 3C12G5
Source: Mouse	UNIPROT ID: P13804	Recommended Dilutions: WB 1:5000-1:50000 IHC 1:8000-1:32000 IF 1:200-1:800
Isotype: IgG2a	Full Name: electron-transfer-flavoprotein, alpha polypeptide	
Immunogen Catalog Number: AG30257	Calculated MW: 30 kDa	
	Observed MW: 30 kDa	

Applications

Tested Applications:
IF/ICC, IHC, WB, ELISA

Species Specificity:
Human, mouse, rat, pig

Note-IHC: suggested antigen retrieval with TE buffer pH 9.0; (*) Alternatively, antigen retrieval may be performed with citrate buffer pH 6.0

Positive Controls:

WB : HCT 116 cells, LNCaP cells, mouse brain tissue, HuH-7 cells, HeLa cells, K-562 cells, pig liver tissue, rat liver tissue

IHC : human liver cancer tissue,

IF : HepG2 cells,

Background Information

The electron transfer flavoprotein(ETF), located in the mitochondrial matrix, is a nuclear-encoded enzyme delivering to the respiratory chain by straight-chain acyl-CoA dehydrogenases and other dehydrogenases. Mitochondrial fatty acids oxidation and amino acids metabolism are affected in MADD(Multiple acyl-CoA dehydrogenase deficiency). These disorders are linked to a dysfunction of ETF. ETF is a mitochondrial matrix protein consisting of alpha- (30kDa) and beta- (28kDa) subunits encoded by the ETFA and ETFB genes, respectively. (PMID: 31996215, PMID: 16510302)

Storage

Storage:

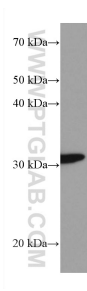
Store at -20°C. Stable for one year after shipment.

Storage Buffer:

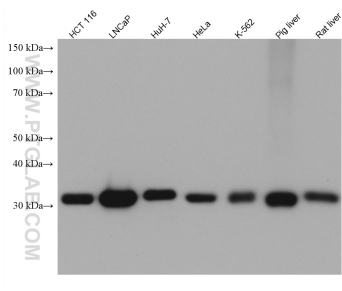
PBS with 0.02% sodium azide and 50% glycerol pH 7.3.

Aliquoting is unnecessary for -20°C storage

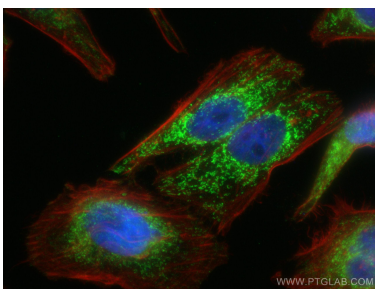
Selected Validation Data



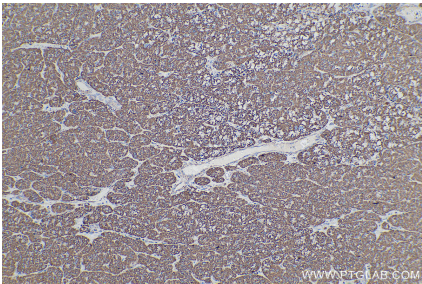
mouse brain tissue were subjected to SDS PAGE followed by western blot with 67661-1-Ig (ETFA antibody) at dilution of 1:10000 incubated at room temperature for 1.5 hours.



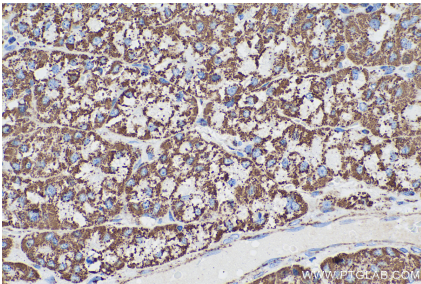
Various lysates were subjected to SDS PAGE followed by western blot with 67661-1-Ig (ETFA antibody) at dilution of 1:10000 incubated at room temperature for 1.5 hours.



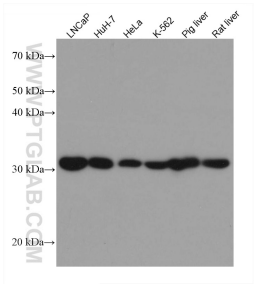
Immunofluorescent analysis of (4% PFA) fixed HepG2 cells using ETFA antibody (67661-1-Ig, Clone: 3C12G5) at dilution of 1:400 and CoraLite®488-Conjugated AffiniPure Goat Anti-Mouse IgG(H+L), CL594-Phalloidin (red). DAPI (blue).



Immunohistochemical analysis of paraffin-embedded human liver cancer tissue slide using 67661-1-Ig (ETFA antibody) at dilution of 1:16000 (under 10x lens). Heat mediated antigen retrieval with Tris-EDTA buffer (pH 9.0).



Immunohistochemical analysis of paraffin-embedded human liver cancer tissue slide using 67661-1-Ig (ETFA antibody) at dilution of 1:16000 (under 40x lens). Heat mediated antigen retrieval with Tris-EDTA buffer (pH 9.0).



Various lysates were subjected to SDS PAGE followed by western blot with 67661-1-Ig (ETFA antibody) at dilution of 1:10000 incubated at room temperature for 1.5 hours.