

For Research Use Only

# PRKACA Monoclonal antibody

Catalog Number: 67491-1-Ig **Featured Product**



## Basic Information

<b>Catalog Number:</b> 67491-1-Ig	<b>GenBank Accession Number:</b> BC039846	<b>Purification Method:</b> Protein A purification
<b>Size:</b> 800 µg/ml	<b>GeneID (NCBI):</b> 5566	<b>CloneNo.:</b> 4G10D7
<b>Source:</b> Mouse	<b>UNIPROT ID:</b> P17612	<b>Recommended Dilutions:</b> WB 1:1000-1:6000 IHC 1:500-1:2000
<b>Isotype:</b> IgG2a	<b>Full Name:</b> protein kinase, cAMP-dependent, catalytic, alpha	
<b>Immunogen Catalog Number:</b> AG26400	<b>Calculated MW:</b> 41 kDa	
	<b>Observed MW:</b> 38-43 kDa	

## Applications

### Tested Applications:

IHC, WB, ELISA

### Species Specificity:

Human, Mouse, Rat

**Note-IHC: suggested antigen retrieval with TE buffer pH 9.0; (\*) Alternatively, antigen retrieval may be performed with citrate buffer pH 6.0**

### Positive Controls:

WB : HeLa cells, LNCaP cells, HepG2 cells, Jurkat cells, K-562 cells, HSC-T6 cells, NIH/3T3 cells

IHC : human breast cancer tissue, human prostate cancer tissue

## Background Information

PRKACA, also named as PKACA and PKA C-alpha, belongs to the protein kinase superfamily. AGC Ser/Thr protein kinase family and cAMP subfamily. It phosphorylates a large number of substrates in the cytoplasm and the nucleus.

## Storage

### Storage:

Store at -20°C.

### Storage Buffer:

PBS with 0.02% sodium azide and 50% glycerol pH 7.3.

Aliquoting is unnecessary for -20°C storage

For technical support and original validation data for this product please contact:

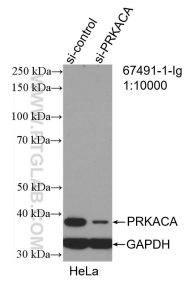
T: 4006900926

E: [Proteintech-CN@ptglab.com](mailto:Proteintech-CN@ptglab.com)

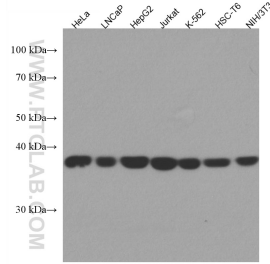
W: [ptgcn.com](http://ptgcn.com)

**This product is exclusively available under Proteintech Group brand and is not available to purchase from any other manufacturer.**

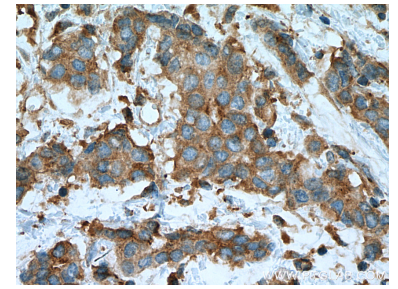
## Selected Validation Data



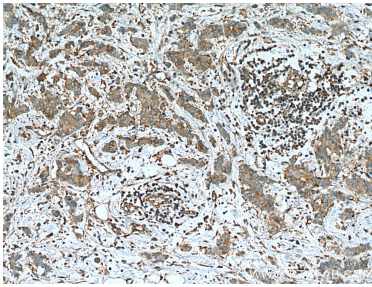
WB result of PRKACA antibody (67491-1-Ig; 1:10000; incubated at room temperature for 1.5 hours) with sh-Control and sh-PRKACA transfected HeLa cells.



Various lysates were subjected to SDS PAGE followed by western blot with 67491-1-Ig (PRKACA antibody) at dilution of 1:2300 incubated at room temperature for 1.5 hours.



Immunohistochemical analysis of paraffin-embedded human breast cancer tissue slide using 67491-1-Ig (PRKACA antibody) at dilution of 1:1000 (under 40x lens). Heat mediated antigen retrieval with Tris-EDTA buffer (pH 9.0).



Immunohistochemical analysis of paraffin-embedded human breast cancer tissue slide using 67491-1-Ig (PRKACA antibody) at dilution of 1:1000 (under 10x lens). Heat mediated antigen retrieval with Tris-EDTA buffer (pH 9.0).