

CDCA5 Monoclonal antibody

Catalog Number: 67418-1-Ig 3 Publications

Basic Information

Catalog Number: 67418-1-Ig	GenBank Accession Number: BC011000	Purification Method: Protein A purification
Size: 2000 µg/ml	GeneID (NCBI): 113130	CloneNo.: 2G1D2
Source: Mouse	UNIPROT ID: Q96FF9	Recommended Dilutions: WB 1:1000-1:6000 IHC 1:150-1:600 IF 1:200-1:800
Isotype: IgG2b	Full Name: cell division cycle associated 5	
Immunogen Catalog Number: AG28958	Calculated MW: 27 kDa	
	Observed MW: 27~35 kDa	

Applications

Tested Applications: IF/ICC, IHC, WB, ELISA	Positive Controls:
Cited Applications: WB, IF, IHC	WB : HeLa cells, HEK-293 cells, HepG2 cells, Jurkat cells, HSC-T6 cells, NIH/3T3 cells, 4T1 cells
Species Specificity: Human, mouse, rat	IHC : human lung cancer tissue, human colon cancer tissue
Cited Species: human, mouse	IF : HeLa cells,
Note-IHC: suggested antigen retrieval with TE buffer pH 9.0; (*) Alternatively, antigen retrieval may be performed with citrate buffer pH 6.0	

Background Information

Human cell division cycle associated 5 (CDCA5), also known as Sororin, is required for stable binding of cohesin to chromatid in the S and G2/M phases and degraded through anaphase-promoting complex-dependent ubiquitination in the G0/G1 phase (PMID: 30808873). Suppression of CDCA5 expression with siRNAs inhibited the growth of lung cancer cells. CDCA5 positivity is an independent prognostic factor for lung cancer patients (PMID: 20551060). The predicted molecular size of CDCA is 27 kD, with an electrophoretic mobility of ~35 kD on SDS-PAGE, possibly due to its isoelectric point (pI) of approximately 10 (PMID: 22580470).

Notable Publications

Author	Pubmed ID	Journal	Application
Yu Deng	36233194	Int J Mol Sci	IHC,WB
Xiaoying Jin	35509067	J Transl Med	WB,IHC,IF
Yingji Chen	33937050	Front Oncol	WB

Storage

Storage:
Store at -20°C. Stable for one year after shipment.

Storage Buffer:
PBS with 0.02% sodium azide and 50% glycerol pH 7.3.

Aliquoting is unnecessary for -20°C storage

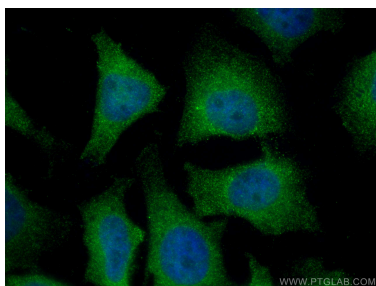
For technical support and original validation data for this product please contact:

T: 4006900926

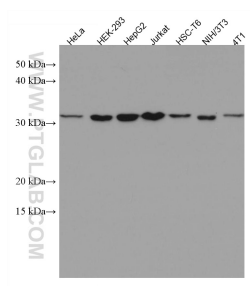
E: Proteintech-CN@ptglab.comW: ptgcn.com

This product is exclusively available under Proteintech Group brand and is not available to purchase from any other manufacturer.

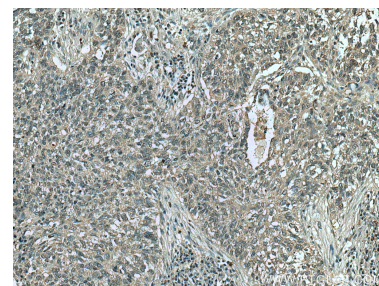
Selected Validation Data



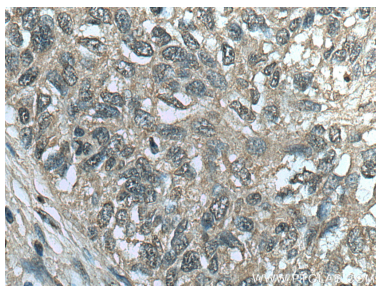
Immunofluorescent analysis of (4% PFA) fixed HeLa cells using CDCA5 antibody (67418-1-Ig, Clone: 2G1D2) at dilution of 1:400 and CoraLite®488-Conjugated AffiniPure Goat Anti-Mouse IgG(H+L).



Various lysates were subjected to SDS PAGE followed by western blot with 67418-1-Ig (CDCA5 antibody) at dilution of 1:3000 incubated at room temperature for 1.5 hours.



Immunohistochemical analysis of paraffin-embedded human lung cancer tissue slide using 67418-1-Ig (CDCA5 antibody) at dilution of 1:300 (under 10x lens). Heat mediated antigen retrieval with Tris-EDTA buffer (pH 9.0).



Immunohistochemical analysis of paraffin-embedded human lung cancer tissue slide using 67418-1-Ig (CDCA5 antibody) at dilution of 1:300 (under 40x lens). Heat mediated antigen retrieval with Tris-EDTA buffer (pH 9.0).