

For Research Use Only

MYH1 Monoclonal antibody

Catalog Number: 67299-1-Ig **2 Publications**



Basic Information

Catalog Number: 67299-1-Ig	GenBank Accession Number: BC114545	Purification Method: Protein A purification
Size: 1500 µg/ml	GeneID (NCBI): 4619	CloneNo.: 1G10H9
Source: Mouse	UNIPROT ID: P12882	Recommended Dilutions: WB 1:20000-1:100000 IHC 1:2000-1:20000 IF 1:400-1:1600
Isotype: IgG2a	Full Name: myosin, heavy chain 1, skeletal muscle, adult	
Immunogen Catalog Number: AG17129	Calculated MW: 1939 aa, 223 kDa	
	Observed MW: 220 kDa	

Applications

Tested Applications:
FC, IF-P, IHC, WB, ELISA

Cited Applications:
IF, WB

Species Specificity:
Human, mouse, pig

Cited Species:
mouse, pig

Note-IHC: suggested antigen retrieval with TE buffer pH 9.0; (*) Alternatively, antigen retrieval may be performed with citrate buffer pH 6.0

Positive Controls:

WB: human skeletal muscle tissue, pig skeletal muscle tissue, mouse skeletal muscle tissue

IHC: mouse skeletal muscle tissue,

IF: mouse skeletal muscle tissue,

Background Information

MYH1 (MyHC-2x) encodes the IIX isoform of myosin heavy chain (MyHC). Myosin is a large, ubiquitous, motor protein that generates force through its interaction with actin, thus involving it in a number of cellular processes including cytokinesis, karyokinesis, cell migration, and muscle contraction. Muscle fibers can be divided as type 1 (slow) and type 2 (fast). MYH1 belongs to type 2.

Notable Publications

Author	Pubmed ID	Journal	Application
Lingyu Zhang	35583212	Food Funct	WB
Xiaomao Luo	37511159	Int J Mol Sci	IF, WB

Storage

Storage:

Store at -20°C. Stable for one year after shipment.

Storage Buffer:

PBS with 0.02% sodium azide and 50% glycerol pH 7.3.

Aliquoting is unnecessary for -20°C storage

For technical support and original validation data for this product please contact:

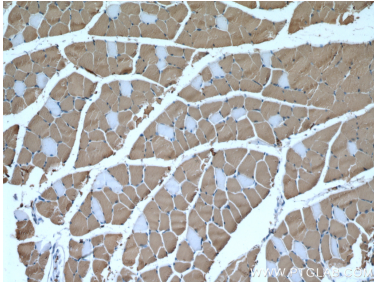
T: 4006900926

E: Proteintech-CN@ptglab.com

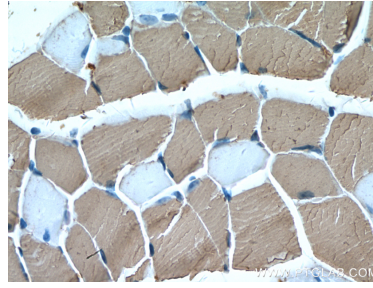
W: ptgcn.com

This product is exclusively available under Proteintech Group brand and is not available to purchase from any other manufacturer.

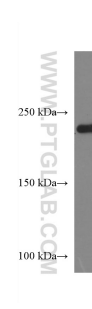
Selected Validation Data



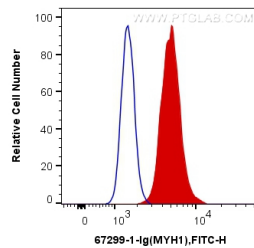
Immunohistochemical analysis of paraffin-embedded mouse skeletal muscle tissue slide using 67299-1-Ig (MYH1 antibody) at dilution of 1:10000 (under 10x lens). Heat mediated antigen retrieval with Tris-EDTA buffer (pH 9.0).



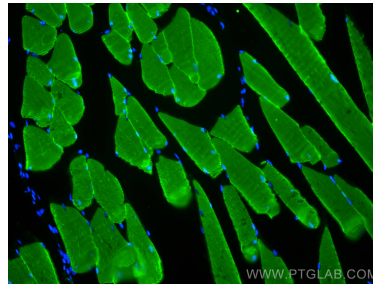
Immunohistochemical analysis of paraffin-embedded mouse skeletal muscle tissue slide using 67299-1-Ig (MYH1 antibody) at dilution of 1:10000 (under 40x lens). Heat mediated antigen retrieval with Tris-EDTA buffer (pH 9.0).



1 μ g human skeletal muscle lysates were subjected to SDS PAGE followed by western blot with 67299-1-Ig (MYH1 antibody) at dilution of 1:100000 incubated at room temperature for 1.5 hours.



1X10⁶ C2C12 cells were intracellularly stained with 0.4 μ g Anti-Human MYH1 (67299-1-Ig, Clone:1G10H9) and CoraLite@488-Conjugated AffiniPure Goat Anti-Mouse IgG(H+L) at dilution 1:1000 (red), or 0.4 μ g Control Antibody. Cells were fixed with 4% PFA and permeabilized with Flow Cytometry Perm Buffer (PF00011-C).



Immunofluorescent analysis of (4% PFA) fixed mouse skeletal muscle tissue using MYH1 antibody (67299-1-Ig, Clone: 1G10H9) at dilution of 1:800 and CoraLite@488-Conjugated AffiniPure Goat Anti-Mouse IgG(H+L).