

For Research Use Only

Luciferase Monoclonal antibody

Catalog Number: 67293-1-Ig **2 Publications**



Basic Information

Catalog Number: 67293-1-Ig	GenBank Accession Number: AY015993	Purification Method: Protein A purification
Size: 1700 µg/ml	GeneID (NCBI): Full Name:	CloneNo.: 2D2E1
Source: Mouse	Calculated MW: 20 kDa	Recommended Dilutions: WB 1:5000-1:50000
Isotype: IgG2a		
Immunogen Catalog Number: AG13000		

Applications

Tested Applications: WB, ELISA	Positive Controls: WB : Recombinant protein, Recombinant protein
Cited Applications: WB	
Species Specificity: Gaussia princeps	
Cited Species: human	

Background Information

This antibody is designed to detect the luciferase of luciferase (Gaussia princeps) tagged protein.

Notable Publications

Author	Pubmed ID	Journal	Application
Yifei Zhao	34730388	J Virol	WB
Junxin Mai	35597930	BMC Biotechnol	WB

Storage

Storage:
Store at -20°C.
Storage Buffer:
PBS with 0.02% sodium azide and 50% glycerol pH 7.3.
Aliquoting is unnecessary for -20°C storage

For technical support and original validation data for this product please contact:

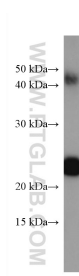
T: 4006900926

E: Proteintech-CN@ptglab.com

W: ptgcn.com

This product is exclusively available under Proteintech Group brand and is not available to purchase from any other manufacturer.

Selected Validation Data



Luciferase tagged protein were subjected to SDS PAGE followed by western blot with 67293-1-Ig (Luciferase antibody) at dilution of 1:20000 incubated at room temperature for 1.5 hours.