

For Research Use Only

# CYP2E1-Specific Monoclonal antibody



Catalog Number: 67263-1-Ig **4 Publications**

## Basic Information

<b>Catalog Number:</b> 67263-1-Ig	<b>GenBank Accession Number:</b> NM_000773	<b>Purification Method:</b> Protein A purification
<b>Size:</b> 2100 µg/ml	<b>GeneID (NCBI):</b> 1571	<b>CloneNo.:</b> 1F12G7
<b>Source:</b> Mouse	<b>UNIPROT ID:</b> P05181	<b>Recommended Dilutions:</b> WB 1:1000-1:6000 IHC 1:500-1:2000 IF 1:200-1:800
<b>Isotype:</b> IgG2b	<b>Full Name:</b> cytochrome P450, family 2, subfamily E, polypeptide 1	
	<b>Calculated MW:</b> 57 kDa	
	<b>Observed MW:</b> 50-57 kDa	

## Applications

### Tested Applications:

IF-P, IHC, WB, ELISA

### Cited Applications:

IHC, WB

### Species Specificity:

mouse, rat, pig, human

### Cited Species:

mouse

**Note-IHC: suggested antigen retrieval with TE buffer pH 9.0; (\*) Alternatively, antigen retrieval may be performed with citrate buffer pH 6.0**

### Positive Controls:

**WB:** pig liver tissue, rat liver tissue, mouse liver tissue

**IHC:** human liver tissue, human liver cancer tissue

**IF:** mouse liver tissue,

## Background Information

CYP2E1, also named as CYP11E1, 4-nitrophenol 2-hydroxylase, P450-J and CYP2E, belongs to the cytochrome P450 family. CYP2E1 metabolizes several precarcinogens, drugs, and solvents to reactive metabolites. It inactivates a number of drugs and xenobiotics and also bioactivates many xenobiotic substrates to their hepatotoxic or carcinogenic forms. CYP2E1 catalyze the reaction: 4-nitrophenol + NADPH + O<sub>2</sub> = 4-nitrocatechol + NADP<sup>+</sup> + H<sub>2</sub>O. CYP2E1 can be detected as 50-57 kDa (full-length) and ~40 kDa (N-terminal signal peptide cleaved) (PMID: 21130154). The antibody is specific to CYP2E1.

## Notable Publications

Author	Pubmed ID	Journal	Application
Min Wei	36182737	Biomed Pharmacother	WB
Huan Yang	34366426	Med Sci Monit	WB
Qianqian Xu	35559264	Front Pharmacol	WB,IHC

## Storage

### Storage:

Store at -20°C. Stable for one year after shipment.

### Storage Buffer:

PBS with 0.02% sodium azide and 50% glycerol pH 7.3.

Aliquoting is unnecessary for -20°C storage

For technical support and original validation data for this product please contact:

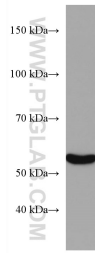
T: 4006900926

E: Proteintech-CN@ptglab.com

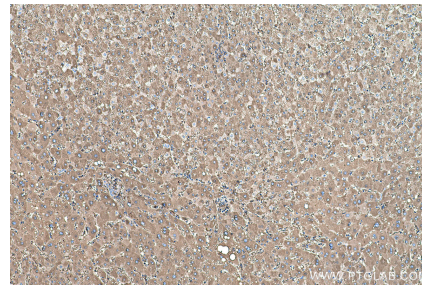
W: ptgcn.com

**This product is exclusively available under Proteintech Group brand and is not available to purchase from any other manufacturer.**

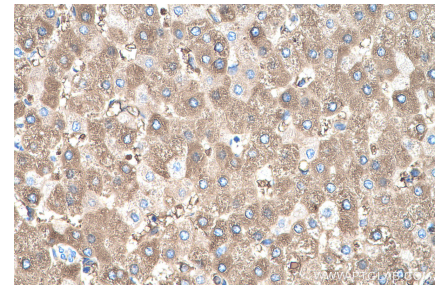
## Selected Validation Data



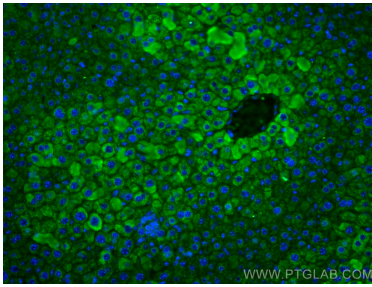
pig liver tissue were subjected to SDS PAGE followed by western blot with 67263-1-Ig (CYP2E1-Specific antibody) at dilution of 1:3000 incubated at room temperature for 1.5 hours.



Immunohistochemical analysis of paraffin-embedded human liver tissue slide using 67263-1-Ig (CYP2E1-Specific antibody) at dilution of 1:1000 (under 10x lens). Heat mediated antigen retrieval with Tris-EDTA buffer (pH 9.0).



Immunohistochemical analysis of paraffin-embedded human liver tissue slide using 67263-1-Ig (CYP2E1-Specific antibody) at dilution of 1:1000 (under 40x lens). Heat mediated antigen retrieval with Tris-EDTA buffer (pH 9.0).



Immunofluorescent analysis of (4% PFA) fixed mouse liver tissue using CYP2E1-Specific antibody (67263-1-Ig, Clone: 1F12G7) at dilution of 1:400 and CoraLite®488-Conjugated AffiniPure Goat Anti-Mouse IgG(H+L).