

CYP3A4 Monoclonal antibody

Catalog Number: 67110-1-Ig 3 Publications

Basic Information

Catalog Number:	67110-1-Ig	GenBank Accession Number:	BC101631	Purification Method:	Protein A purification
Size:	2000 μ g/ml	GeneID (NCBI):	1576	CloneNo.:	2F11C4
Source:	Mouse	UNIPROT ID:	P08684	Recommended Dilutions:	WB 1:5000-1:50000
Isotype:	IgG1	Full Name:	cytochrome P450, family 3, subfamily A, polypeptide 4	IHC 1:300-1:1200	IF 1:200-1:800
Immunogen Catalog Number:	AG13074	Calculated MW:	503 aa, 57 kDa		
		Observed MW:	51-57 kDa		

Applications

Tested Applications:
IF/ICC, IF-P, IHC, WB, ELISA

Cited Applications:
IF

Species Specificity:
Human, Mouse, Rat, Pig

Cited Species:
human

Note-IHC: suggested antigen retrieval with TE buffer pH 9.0; (*) Alternatively, antigen retrieval may be performed with citrate buffer pH 6.0

Positive Controls:

WB : mouse liver tissue, pig liver tissue, pig gall bladder tissue, mouse lung tissue, rat liver tissue

IHC : mouse liver tissue, human liver cancer tissue

IF : mouse liver tissue, rat liver tissue, HepG2 cells

Background Information

Notable Publications

Author	Pubmed ID	Journal	Application
Rong Li	35507159	Methods Mol Biol	IF
Rong Li	35371477	Biomed Rep	IF
Wenhui Qian	36804823	Acta Biomater	IF

Storage

Storage:
Store at -20°C. Stable for one year after shipment.
Storage Buffer:
PBS with 0.02% sodium azide and 50% glycerol pH 7.3.
Aliquoting is unnecessary for -20°C storage

For technical support and original validation data for this product please contact:

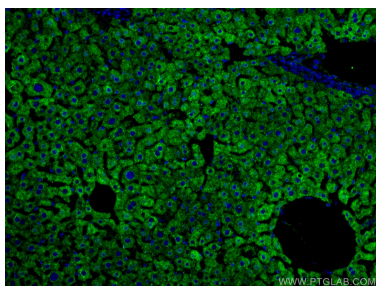
T: 4006900926

E: Proteintech-CN@ptglab.com

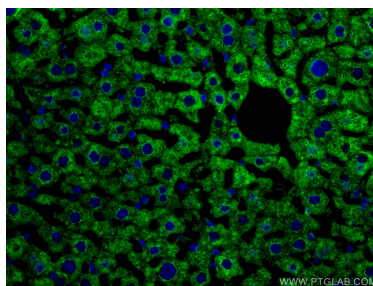
W: ptgcn.com

This product is exclusively available under Proteintech Group brand and is not available to purchase from any other manufacturer.

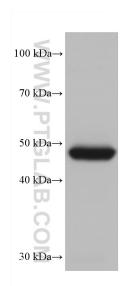
Selected Validation Data



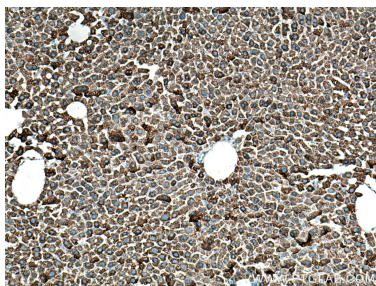
Immunofluorescent analysis of (4% PFA) fixed mouse liver tissue using CYP3A4 antibody (67110-1-Ig, Clone: 2F11C4) at dilution of 1:400 and CoraLite®488-Conjugated AffiniPure Goat Anti-Mouse IgG(H+L).



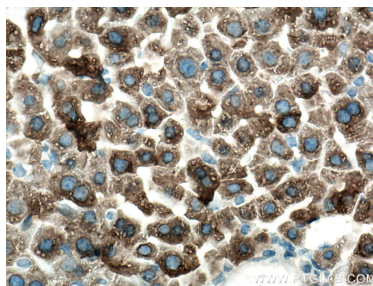
Immunofluorescent analysis of (4% PFA) fixed mouse liver tissue using CYP3A4 antibody (67110-1-Ig, Clone: 2F11C4) at dilution of 1:400 and CoraLite®488-Conjugated AffiniPure Goat Anti-Mouse IgG(H+L).



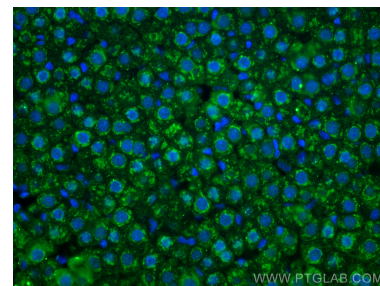
mouse liver tissue were subjected to SDS PAGE followed by western blot with 67110-1-Ig (CYP3A4 antibody) at dilution of 1:20000 incubated at room temperature for 1.5 hours.



Immunohistochemical analysis of paraffin-embedded mouse liver tissue slide using 67110-1-Ig (CYP3A4 antibody) at dilution of 1:600 (under 10x lens). Heat mediated antigen retrieval with Tris-EDTA buffer (pH 9.0).



Immunohistochemical analysis of paraffin-embedded mouse liver tissue slide using 67110-1-Ig (CYP3A4 antibody) at dilution of 1:600 (under 40x lens). Heat mediated antigen retrieval with Tris-EDTA buffer (pH 9.0).



Immunofluorescent analysis of (4% PFA) fixed rat liver tissue using CYP3A4 antibody (67110-1-Ig, Clone: 2F11C4) at dilution of 1:1000 and CoraLite®488-Conjugated AffiniPure Goat Anti-Mouse IgG(H+L).