

# Calpastatin Monoclonal antibody

Catalog Number: 67107-1-Ig **2 Publications**

## Basic Information

Catalog Number:

67107-1-Ig

Size:

1850 µg/ml

Source:

Mouse

Isotype:

IgG1

Immunogen Catalog Number:

AG28669

GenBank Accession Number:

BC013579

GeneID (NCBI):

831

UNIPROT ID:

P20810

Full Name:

calpastatin

Calculated MW:

667 aa, 72 kDa

Observed MW:

115 kDa

Purification Method:

Protein G purification

CloneNo.:

1G12A2

Recommended Dilutions:

WB 1:1000-1:6000

IF 1:200-1:800

## Applications

Tested Applications:

FC, IF/ICC, WB, ELISA

Cited Applications:

WB

Species Specificity:

Human

Cited Species:

mouse

Positive Controls:

WB : HeLa cells, HepG2 cells, LNCaP cells, MCF-7 cells, THP-1 cells, HEK-293 cells

IF : HeLa cells,

## Background Information

### Notable Publications

Author	Pubmed ID	Journal	Application
Juan Wang	35026406	Pharmacol Res	WB
Fengming Shen	35498131	Oxid Med Cell Longev	WB

## Storage

Storage:

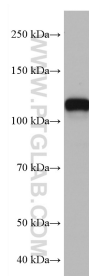
Store at -20°C. Stable for one year after shipment.

Storage Buffer:

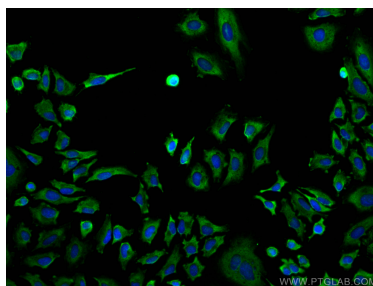
PBS with 0.02% sodium azide and 50% glycerol pH 7.3.

Aliquoting is unnecessary for -20°C storage

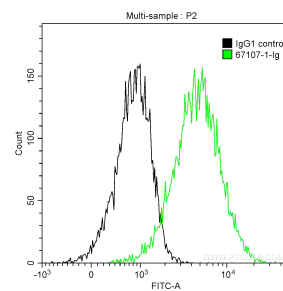
## Selected Validation Data



HeLa cells were subjected to SDS PAGE followed by western blot with 67107-1-Ig (CAST antibody) at dilution of 1:4000 incubated at room temperature for 1.5 hours.



Immunofluorescent analysis of (-20°C Ethanol) fixed HeLa cells using Calpastatin antibody (67107-1-Ig, Clone: 1G12A2 ) at dilution of 1:400 and CoraLite®488-Conjugated AffiniPure Goat Anti-Mouse IgG(H+L).



1X10<sup>6</sup> HeLa cells were intracellularly stained with 0.2 ug Anti-Human Calpastatin (67107-1-Ig, Clone:1G12A2) and CoraLite®488-Conjugated AffiniPure Goat Anti-Mouse IgG(H+L) at dilution 1:1000 (green), and 0.2 ug Mouse IgG1 Isotype Control (66360-1-Ig, Clone: T1F8D3F10) (black). Cells were fixed with 4% PFA and permeabilized with 0.1% TritonX-100.