

# CTBP1 Monoclonal antibody

Catalog Number: 66995-1-Ig

## Basic Information

**Catalog Number:**

66995-1-Ig

**Size:**

2300 µg/ml

**Source:**

Mouse

**Isotype:**

IgG1

**Immunogen Catalog Number:**

AG28567

**GenBank Accession Number:**

BC011655

**GeneID (NCBI):**

1487

**UNIPROT ID:**

Q13363

**Full Name:**

C-terminal binding protein 1

**Calculated MW:**

48 kDa

**Observed MW:**

45-48 kDa

**Purification Method:**

Protein A purification

**CloneNo.:**

1C4B2

**Recommended Dilutions:**

WB 1:5000-1:50000

IHC 1:1000-1:4000

IF 1:2000-1:8000

## Applications

**Tested Applications:**

FC, IF/ICC, IHC, WB, ELISA

**Species Specificity:**

Human, rat, mouse

**Note-IHC: suggested antigen retrieval with TE buffer pH 9.0; (\*) Alternatively, antigen retrieval may be performed with citrate buffer pH 6.0**

**Positive Controls:**

**WB :** MCF-7 cells, HEK-293 cells, A549 cells, HL-60 cells, HSC-T6 cells, HeLa cells, NCCIT cells, LNCaP cells, Jurkat cells, 4T1 cells, RAW 264.7 cells, NIH/3T3 cells

**IHC :** human breast cancer tissue, human prostate cancer tissue

**IF :** HepG2 cells,

## Background Information

CTBP1, also named as C-terminal-binding protein 1, is a 440 amino acid protein, which belongs to the D-isomer specific 2-hydroxyacid dehydrogenase family. CTBP1 is a cellular phosphoprotein that associates with various proteins and functions as a corepressor of transcription. CTBP1 and the related protein CTBP2 are characterized as C-terminal binding protein of adenovirus E1A, and they preferentially associate with the E1A via a 5-amino acid motif, PLDLS, to repress E1A induced oncogenesis and cellular transformation. CTBP1 is expressed from embryo to adult, but CTBP2 is mainly expressed during embryogenesis.

## Storage

**Storage:**

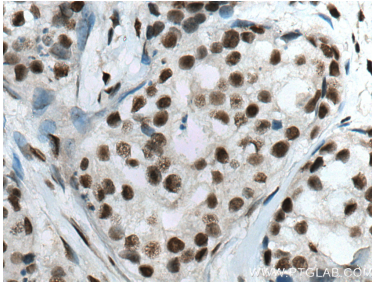
Store at -20°C. Stable for one year after shipment.

**Storage Buffer:**

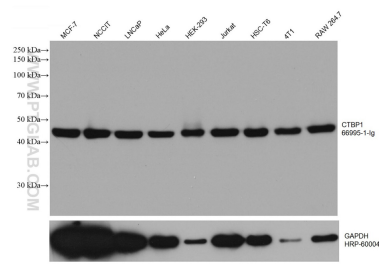
PBS with 0.02% sodium azide and 50% glycerol pH 7.3.

Aliquoting is unnecessary for -20°C storage

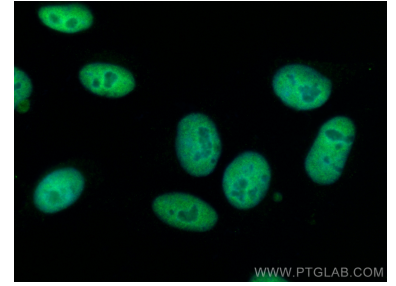
## Selected Validation Data



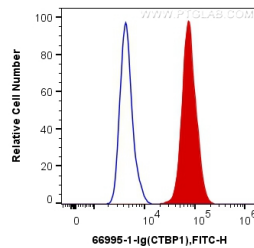
Immunohistochemical analysis of paraffin-embedded human breast cancer tissue slide using 66995-1-Ig (CTBP1 antibody) at dilution of 1:2000 (under 40x lens). Heat mediated antigen retrieval with Tris-EDTA buffer (pH 9.0).



Various lysates were subjected to SDS PAGE followed by western blot with 66995-1-Ig (CTBP1 antibody) at dilution of 1:20000 incubated at room temperature for 1.5 hours. The membrane was stripped and reblotted with HRP-conjugated GAPDH Monoclonal antibody (HRP-60004) as loading control.



Immunofluorescent analysis of (4% PFA) fixed HepG2 cells using CTBP1 antibody (66995-1-Ig, Clone: 1C4B2 ) at dilution of 1:4000 and CoraLite®488-Conjugated AffiniPure Goat Anti-Mouse IgG(H+L).



$1 \times 10^6$  HepG2 cells were intracellularly stained with 0.2 ug Anti-Human CTBP1 (66995-1-Ig, Clone: 1C4B2) and CoraLite®488-Conjugated AffiniPure Goat Anti-Mouse IgG(H+L) at dilution 1:1000 (red), or 0.2 ug Mouse IgG1 Isotype Control (66360-1-Ig, Clone: T1F8D3F10) (blue). Cells were fixed and permeabilized with Transcription Factor Staining Buffer Kit (PF00011).