

# CDC25C Monoclonal antibody

Catalog Number: 66912-1-Ig 4 Publications

## Basic Information

### Catalog Number:

66912-1-Ig

### Size:

2200 µg/ml

### Source:

Mouse

### Isotype:

IgG1

### Immunogen Catalog Number:

AG10240

### GenBank Accession Number:

BC019089

### GeneID (NCBI):

995

### UNIPROT ID:

P30307

### Full Name:

cell division cycle 25 homolog C (S. pombe)

### Calculated MW:

473 aa, 53 kDa

### Observed MW:

46-53 kDa

### Purification Method:

Protein A purification

### CloneNo.:

2B6B12

### Recommended Dilutions:

WB 1:5000-1:50000

## Applications

### Tested Applications:

FC, WB, ELISA

### Cited Applications:

WB

### Species Specificity:

Human, Mouse, Rat

### Cited Species:

human, mouse

### Positive Controls:

WB : HeLa cells, HepG2 cells, HEK-293 cells, Jurkat cells, K-562 cells, HSC-T6 cells, PC-12 cells, NIH/3T3 cells, Raji cells

## Background Information

The cell division cycle 25 (CDC25) family of proteins are highly conserved dual specificity phosphatases that activate cyclin-dependent kinase (CDK) complexes, which in turn regulate progression through the cell division cycle. CDC25C (cell division cycle 25 homolog C) is one of the 3 isoforms of CDC25 in mammalian cells. It is present in the cytoplasm of asynchronously growing human cells (PMID:10330186). And it may be phosphorylated by its own substrate, an active cdc2-cyclin B complex, to create an autoactivation loop (PMID:7937793). It can be hyperphosphorylated to get the active form of 70 kDa (PMID:18296513). CDC25C has some isoforms with molecular mass of 46-53 kDa.

## Notable Publications

Author	Pubmed ID	Journal	Application
Silu Hou	36427601	Food Chem Toxicol	WB
Jun Ma	34820015	Oncol Lett	WB
Ming Li	36526012	Toxicology	WB

## Storage

### Storage:

Store at -20°C. Stable for one year after shipment.

### Storage Buffer:

PBS with 0.02% sodium azide and 50% glycerol pH 7.3.

Aliquoting is unnecessary for -20°C storage

For technical support and original validation data for this product please contact:

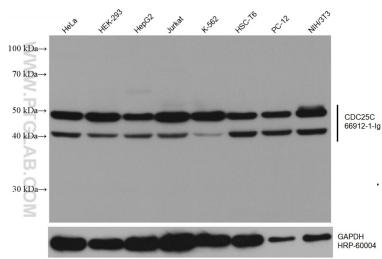
T: 4006900926

E: [Proteintech-CN@ptglab.com](mailto:Proteintech-CN@ptglab.com)

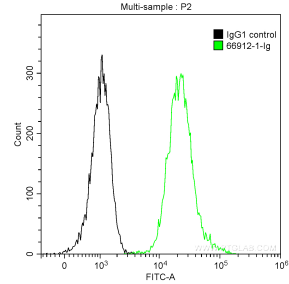
W: [ptgcn.com](http://ptgcn.com)

This product is exclusively available under Proteintech Group brand and is not available to purchase from any other manufacturer.

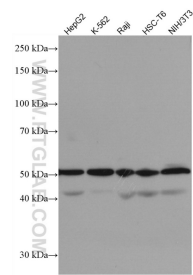
Selected Validation Data



Various lysates were subjected to SDS PAGE followed by western blot with 66912-1-Ig (CDC25C antibody) at dilution of 1:10000 incubated at room temperature for 1.5 hours. The membrane was stripped and reblotted with HRP-conjugated GAPDH Monoclonal antibody (HRP-60004) as loading control.



1X10<sup>6</sup> K-562 cells were intracellularly stained with 0.2 ug Anti-Human CDC25C (66912-1-Ig, Clone:2B6B12) and CoraLite®488-Conjugated AffiniPure Goat Anti-Mouse IgG(H+L) at dilution 1:1000 (green), and 0.2 ug Control Antibody. Cells were fixed with 90% MeOH.



Various lysates were subjected to SDS PAGE followed by western blot with 66912-1-Ig (CDC25C antibody) at dilution of 1:3000 incubated at room temperature for 1.5 hours.