

For Research Use Only

CCNY Monoclonal antibody

Catalog Number: 66865-1-Ig

Featured Product

1 Publications



Basic Information

Catalog Number:

66865-1-Ig

Size:

1000 µg/ml

Source:

Mouse

Isotype:

IgG1

Immunogen Catalog Number:

AG12691

GenBank Accession Number:

BC104773

GeneID (NCBI):

219771

UNIPROT ID:

Q8ND76

Full Name:

cyclin Y

Calculated MW:

33 kDa, 39 kDa

Observed MW:

37 kDa

Purification Method:

Protein G purification

CloneNo.:

2C9E3

Recommended Dilutions:

WB 1:2000-1:10000

Applications

Tested Applications:

WB, ELISA

Cited Applications:

IF, WB

Species Specificity:

Human, Rat, Mouse

Cited Species:

mouse

Positive Controls:

WB : HeLa cells, NIH/3T3 cells, RAW 264.7 cells, A549 cells, HEK-293 cells, HepG2 cells, Jurkat cells, HSC-T6 cells

Background Information

CCNY, also named as C10orf9, CBCP1, CFP1, is a novel cyclin. CCNY acts as a cell-cycle regulator of Wnt signaling pathway during G2/M phase by recruiting CDK14/PFTK1 to the plasma membrane and promoting phosphorylation of LRP6, leading to the activation of the Wnt signaling pathway.

Notable Publications

Author	Pubmed ID	Journal	Application
Marc Dohmen	32098961	Nat Commun	WB,IF

Storage

Storage:

Store at -20°C. Stable for one year after shipment.

Storage Buffer:

PBS with 0.02% sodium azide and 50% glycerol pH 7.3.

Aliquoting is unnecessary for -20°C storage

For technical support and original validation data for this product please contact:

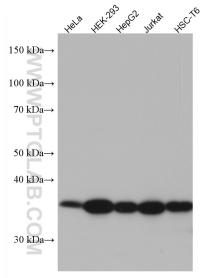
T: 4006900926

E: Proteintech-CN@ptglab.com

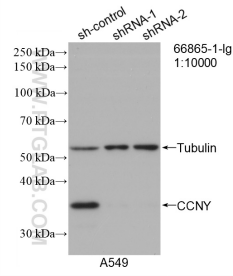
W: ptgcn.com

This product is exclusively available under Proteintech Group brand and is not available to purchase from any other manufacturer.

Selected Validation Data



Various lysates were subjected to SDS PAGE followed by western blot with 66865-1-Ig (CCNY antibody) at dilution of 1:5000 incubated at room temperature for 1.5 hours.



WB result of CCNY antibody (66865-1-Ig; 1:10000; incubated at room temperature for 1.5 hours) with sh-Control and sh-CCNY transfected A549 cells.