

For Research Use Only

TFPI Monoclonal antibody

Catalog Number: 66842-1-Ig **1 Publications**



Basic Information

Catalog Number: 66842-1-Ig	GenBank Accession Number: BC015514	Purification Method: Protein A purification
Size: 1700 µg/ml	GeneID (NCBI): 7035	CloneNo.: 1B12F11
Source: Mouse	UNIPROT ID: P10646	Recommended Dilutions: WB 1:1000-1:3000
Isotype: IgG2a	Full Name: tissue factor pathway inhibitor (lipoprotein-associated coagulation inhibitor)	
Immunogen Catalog Number: AG14980	Calculated MW: 251aa, 29 kDa; 304aa, 35 kDa	
	Observed MW: 35-38 kDa	

Applications

Tested Applications: WB, ELISA	Positive Controls: WB : human placenta tissue, HepG2 cells
Cited Applications: WB	
Species Specificity: Human	
Cited Species: human	

Background Information

Tissue factor pathway inhibitor (TFPI) is a critical anticoagulant protein present in endothelium and platelets. TFPI is produced as two major isoforms in humans, TFPIa and TFPIb that result from alternative splicing. The TFPIb isoform localizes to the endothelium surface where it is a potent inhibitor of tissue factor-factor VIIa complexes that initiate blood coagulation. The TFPIa isoform is present in platelets. TFPI is a Kunitz-type serine protease inhibitor that exerts anticoagulant activity by blocking early procoagulant stimuli. TFPI can enhance anti-thrombotic treatment in sepsis, inflammatory diseases, and cardiovascular diseases.

Notable Publications

Author	Pubmed ID	Journal	Application
Ting Li	34238922	Cell Death Dis	WB

Storage

Storage:
Store at -20°C. Stable for one year after shipment.
Storage Buffer:
PBS with 0.02% sodium azide and 50% glycerol pH 7.3.
Aliquoting is unnecessary for -20°C storage

For technical support and original validation data for this product please contact:

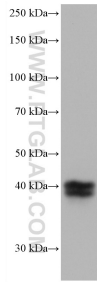
T: 4006900926

E: Proteintech-CN@ptglab.com

W: ptgcn.com

This product is exclusively available under Proteintech Group brand and is not available to purchase from any other manufacturer.

Selected Validation Data



human placenta tissue were subjected to SDS PAGE followed by western blot with 66842-1-Ig (TFPI antibody) at dilution of 1:2000 incubated at room temperature for 1.5 hours.