

For Research Use Only

GCLM Monoclonal antibody

Catalog Number: 66808-1-Ig

Featured Product

3 Publications



Basic Information

Catalog Number:

66808-1-Ig

Size:

2500 µg/ml

Source:

Mouse

Isotype:

IgG2b

Immunogen Catalog Number:

AG5497

GenBank Accession Number:

BC041809

GeneID (NCBI):

2730

UNIPROT ID:

P48507

Full Name:

glutamate-cysteine ligase, modifier subunit

Calculated MW:

31 kDa

Observed MW:

31 kDa

Purification Method:

Protein A purification

CloneNo.:

1A5A4

Recommended Dilutions:

WB 1:2000-1:10000

IHC 1:50-1:500

Applications

Tested Applications:

IHC, WB, ELISA

Cited Applications:

WB

Species Specificity:

Human, rat, mouse

Cited Species:

human, rat

Note-IHC: suggested antigen retrieval with TE buffer pH 9.0; (*) Alternatively, antigen retrieval may be performed with citrate buffer pH 6.0

Positive Controls:

WB : HeLa cells, HEK-293 cells, MCF-7 cells, Jurkat cells, HSC-T6 cells, NIH/3T3 cells, RAW 264.7 cells

IHC : human liver cancer tissue, human lung cancer tissue

Background Information

Notable Publications

Author	Pubmed ID	Journal	Application
Yuanyuan Wang	36223681	Eur J Med Chem	WB
Ning Ma	33763175	Oxid Med Cell Longev	WB
Feng Cao	37745297	Front Cell Dev Biol	WB

Storage

Storage:

Store at -20°C. Stable for one year after shipment.

Storage Buffer:

PBS with 0.02% sodium azide and 50% glycerol pH 7.3.

Aliquoting is unnecessary for -20°C storage

For technical support and original validation data for this product please contact:

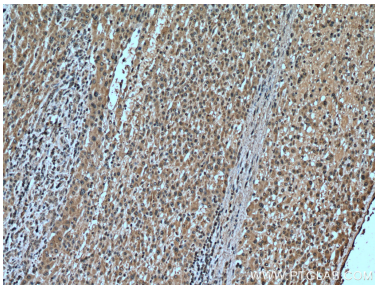
T: 4006900926

E: Proteintech-CN@ptglab.com

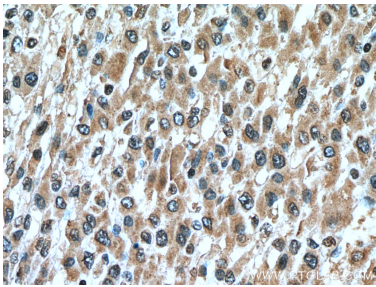
W: ptgcn.com

This product is exclusively available under Proteintech Group brand and is not available to purchase from any other manufacturer.

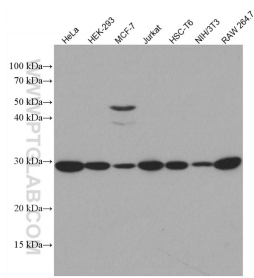
Selected Validation Data



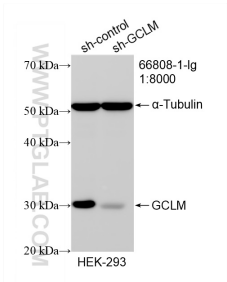
Immunohistochemical analysis of paraffin-embedded human liver cancer tissue slide using 66808-1-Ig (GCLM antibody) at dilution of 1:200 (under 10x lens). Heat mediated antigen retrieval with Tris-EDTA buffer (pH 9.0).



Immunohistochemical analysis of paraffin-embedded human liver cancer tissue slide using 66808-1-Ig (GCLM antibody) at dilution of 1:200 (under 40x lens). Heat mediated antigen retrieval with Tris-EDTA buffer (pH 9.0).



Various lysates were subjected to SDS PAGE followed by western blot with 66808-1-Ig (GCLM antibody) at dilution of 1:5000 incubated at room temperature for 1.5 hours.



WB result of GCLM antibody (66808-1-Ig; 1:8000; incubated at room temperature for 1.5 hours) with sh-Control and sh-GCLM transfected HEK-293 cells.