

For Research Use Only

AQP1 Monoclonal antibody

Catalog Number: 66805-1-Ig **2 Publications**



Basic Information

Catalog Number: 66805-1-Ig	GenBank Accession Number: BC022486	Purification Method: Protein G purification
Size: 1000 µg/ml	GeneID (NCBI): 358	CloneNo.: 2E5D6
Source: Mouse	UNIPROT ID: P29972	Recommended Dilutions: WB 1:5000-1:20000 IHC 1:200-1:800 IF 1:200-1:800
Isotype: IgG1	Full Name: aquaporin 1 (Colton blood group)	
Immunogen Catalog Number: AG14093	Calculated MW: 269 aa, 29 kDa	
	Observed MW: 28 kDa, 38-40 kDa	

Applications

Tested Applications: IF-P, IHC, WB, ELISA	Positive Controls: WB : human heart tissue, human skeletal muscle tissue, pig kidney tissue IHC : human kidney tissue, IF : human kidney tissue,
Cited Applications: IF	
Species Specificity: Human, pig	
Cited Species: human	
Note-IHC: suggested antigen retrieval with TE buffer pH 9.0; (*) Alternatively, antigen retrieval may be performed with citrate buffer pH 6.0	

Background Information

AQP1 is a member of aquaporins (AQPs) that are small membrane-spanning proteins facilitating water transport. AQP1 is expressed in most tissues in the mammalian body. Alterations of AQP1 expression have been linked to variety of diseases, including cancer. The predicted molecular weight of AQP1 is around 28 kDa, while highly glycosylated form can also be observed around 40-45 kDa. (1530176)

Notable Publications

Author	Pubmed ID	Journal	Application
Xin Zhang	37991139	Adv Sci (Weinh)	IF
Lingxiao Tong	37599822	iScience	IF

Storage

Storage:
Store at -20°C. Stable for one year after shipment.
Storage Buffer:
PBS with 0.02% sodium azide and 50% glycerol pH 7.3.
Aliquoting is unnecessary for -20°C storage

For technical support and original validation data for this product please contact:

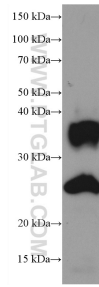
T: 4006900926

E: Proteintech-CN@ptglab.com

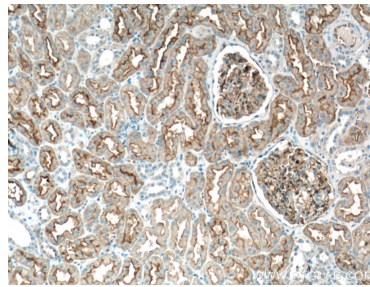
W: ptgcn.com

This product is exclusively available under Proteintech Group brand and is not available to purchase from any other manufacturer.

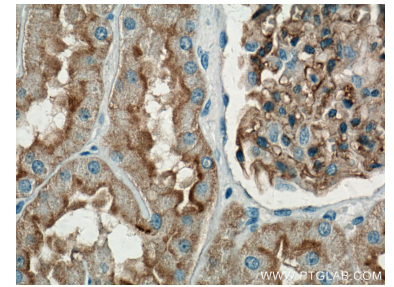
Selected Validation Data



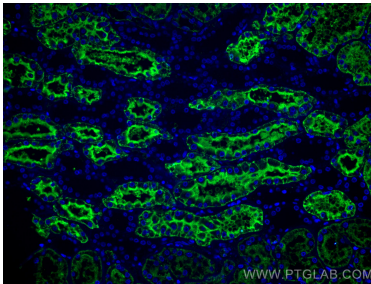
human heart tissue were subjected to SDS PAGE followed by western blot with 66805-1-Ig (AQP1 antibody) at dilution of 1:10000 incubated at room temperature for 1.5 hours.



Immunohistochemical analysis of paraffin-embedded human kidney tissue slide using 66805-1-Ig (AQP1 antibody) at dilution of 1:400 (under 10x lens. Heat mediated antigen retrieval with Tris-EDTA buffer (pH 9.0).



Immunohistochemical analysis of paraffin-embedded human kidney tissue slide using 66805-1-Ig (AQP1 antibody) at dilution of 1:400 (under 40x lens. Heat mediated antigen retrieval with Tris-EDTA buffer (pH 9.0).



Immunofluorescent analysis of (4% PFA) fixed human kidney tissue using AQP1 antibody (66805-1-Ig, Clone: 2E5D6) at dilution of 1:400 and CoraLite®488-Conjugated AffiniPure Goat Anti-Mouse IgG(H+L).