

CRM1 Monoclonal antibody

Catalog Number: 66763-1-Ig 8 Publications

Basic Information

Catalog Number: 66763-1-Ig	GenBank Accession Number: BC032847	Purification Method: Protein A purification
Size: 2285 µg/ml	GeneID (NCBI): 7514	CloneNo.: 2D3B6
Source: Mouse	UNIPROT ID: O14980	Recommended Dilutions: WB 1:5000-1:50000 IHC 1:500-1:2000 IF 1:200-1:800
Isotype: IgG1	Full Name: exportin 1 (CRM1 homolog, yeast)	
Immunogen Catalog Number: AG27337	Calculated MW: 1071 aa, 123 kDa	
	Observed MW: 100-110 kDa	

Applications

Tested Applications: IF, IHC, WB, ELISA	Positive Controls:
Cited Applications: IHC, IP, WB	WB : A431 cells, HeLa cells, HepG2 cells, Jurkat cells, K-562 cells, HSC-T6 cells, PC-12 cells, NIH/3T3 cells, RAW 264.7 cells, HEK-293 cells
Species Specificity: Human, Mouse, Rat	IHC : human breast cancer tissue,
Cited Species: human, rat, mouse	IF : HeLa cells,
Note-IHC: suggested antigen retrieval with TE buffer pH 9.0; (*) Alternatively, antigen retrieval may be performed with citrate buffer pH 6.0	

Background Information

CRM1 (chromosome region maintenance 1, also known as exportin-1 or XPO1), a member of the karyopherin β family of transport receptors, is an important nuclear export receptor recognizing proteins bearing a leucine-rich nuclear export signal (PMID: 9323133). CRM1 is the major receptor for the export of proteins out of the nucleus and is also required for transport of many RNAs (PMID: 17317185). In addition to nuclear export, CRM1 also plays a role in centrosome duplication and spindle assembly (PMID: 22773955). Elevated CRM1 expression has been reported in several cancers, which implicates CRM1 as a potential anti-cancer drug target (PMID: 22677130; 21683812).

Notable Publications

Author	Pubmed ID	Journal	Application
Xiaogang Chen	32467578	Cell Death Dis	WB
Jianning Xu	31326389	Exp Cell Res	WB
Mu Zhang	33569632	Diabetologia	WB

Storage

Storage:
Store at -20°C. Stable for one year after shipment.

Storage Buffer:
PBS with 0.02% sodium azide and 50% glycerol pH 7.3.

Aliquoting is unnecessary for -20°C storage

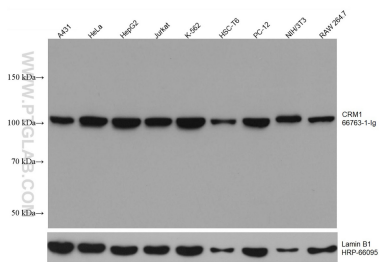
For technical support and original validation data for this product please contact:

T: 4006900926

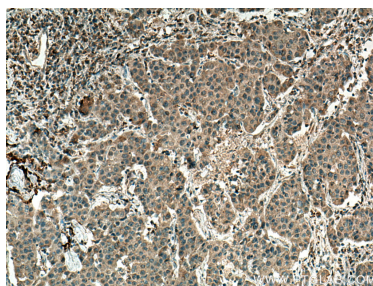
E: Proteintech-CN@ptglab.comW: ptgcn.com

This product is exclusively available under Proteintech Group brand and is not available to purchase from any other manufacturer.

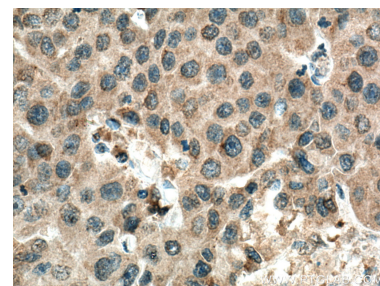
Selected Validation Data



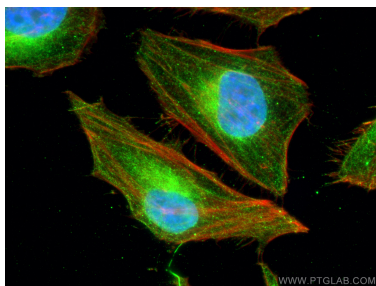
Various lysates were subjected to SDS PAGE followed by western blot with 66763-1-Ig (CRM1 antibody) at dilution of 1:10000 incubated at room temperature for 1.5 hours. The membrane was stripped and reblotted with HRP-conjugated Lamin B1 Monoclonal antibody (HRP-66095) as loading control.



Immunohistochemical analysis of paraffin-embedded human breast cancer tissue slide using 66763-1-Ig (CRM1 antibody) at dilution of 1:1000 (under 10x lens). Heat mediated antigen retrieval with Tris-EDTA buffer (pH 9.0).



Immunohistochemical analysis of paraffin-embedded human breast cancer tissue slide using 66763-1-Ig (CRM1 antibody) at dilution of 1:1000 (under 40x lens). Heat mediated antigen retrieval with Tris-EDTA buffer (pH 9.0).



Immunofluorescent analysis of (4% PFA) fixed HeLa cells using CRM1 antibody (66763-1-Ig, Clone: 2D3B6) at dilution of 1:400 and CoraLite@488-Conjugated AffiniPure Goat Anti-Mouse IgG(H+L), CL594-Phalloidin (red).