

For Research Use Only

ARL13B Monoclonal antibody, PBS Only



Catalog Number: 66739-1-PBS

Basic Information

Catalog Number: 66739-1-PBS	GenBank Accession Number: BC094725	Purification Method: Protein A purification
Size: 1 mg/ml	GeneID (NCBI): 200894	CloneNo.: 1H6C3
Source: Mouse	UNIPROT ID: Q35XY8	
Isotype: IgG2a	Full Name: ADP-ribosylation factor-like 13B	
Immunogen Catalog Number: AG12031	Calculated MW: 48 kDa	
	Observed MW: 60 kDa	

Applications

Tested Applications:
WB, Indirect ELISA, IF

Species Specificity:
Canine, Human, mouse, pig

Background Information

ARL13B, also named as ARL2L1, is a small ciliary G protein of the Ras superfamily. Localized in the cilia, it is required for cilium biogenesis and sonic hedgehog signaling. Defects in ARL13B are the cause of Joubert syndrome (JS) which is an autosomal recessive disorder characterized by a distinctive cerebellar malformation (PMID: 19906870). Arl13b is predicted to be a 48 kDa protein, and the 60 kDa band is likely to represent a modified form of Arl13b. ARL13B can be used to mark the cilia (PMID:22072986).

Storage

Storage:
Store at -80°C.

Storage Buffer:
PBS Only

For technical support and original validation data for this product please contact:

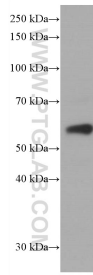
T: 4006900926

E: Proteintech-CN@ptglab.com

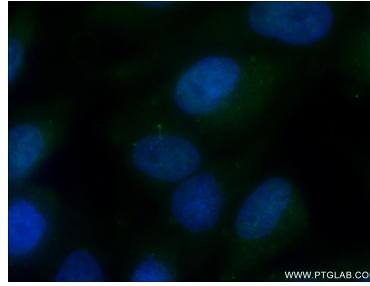
W: ptgcn.com

This product is exclusively available under Proteintech Group brand and is not available to purchase from any other manufacturer.

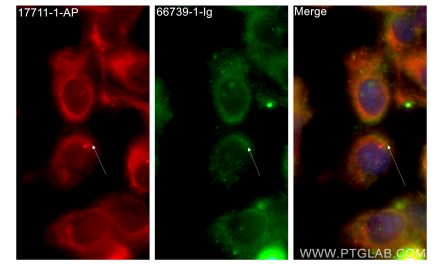
Selected Validation Data



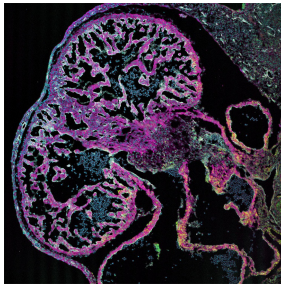
HepG2 cells were subjected to SDS PAGE followed by western blot with 66739-1-Ig (ARL13B antibody) at dilution of 1:3000 incubated at room temperature for 1.5 hours. This data was developed using the same antibody clone with 66739-1-PBS in a different storage buffer formulation.



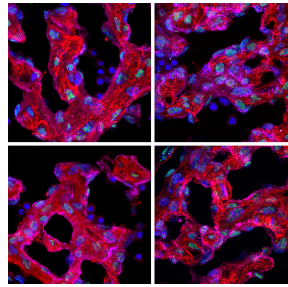
Immunofluorescent analysis of (4% PFA) fixed MDCK cells using 66739-1-Ig (ARL13B antibody) at dilution of 1:60 and Alexa Fluor 488-Conjugated AffiniPure Goat Anti-Mouse IgG(H+L). This data was developed using the same antibody clone with 66739-1-PBS in a different storage buffer formulation.



Immunofluorescent analysis of (-20°C Methanol) fixed hTERT-RPE1 cells using ARL13B antibody (66739-1-Ig, Clone: 1H6C3) at dilution of 1:800 and CoraLite®488-Conjugated AffiniPure Goat Anti-Mouse IgG(H+L), ARL13B antibody (17711-1-AP, red). This data was developed using the same antibody clone with 66739-1-PBS in a different storage buffer formulation.



Frozen tissue section of embryonic mouse heart (E12.5) was stained for cardiac troponin-T/cTnT (magenta, Cat. No 15513-1-AP), CD31/PECAM-1 (white), and Arl13B (yellow, Cat. No 66739-1-Ig) with DAPI as a counterstain for visualizing the nucleus (cyan). cTnT stains cardiomyocytes and was visualized with an Alexa Fluor 555 secondary antibody and pseudocolored to magenta. CD31 stains endocardial/endothelial cells and was visualized with an Alexa Fluor 647 secondary



Frozen tissue section of embryonic mouse heart (E12.5) was stained for cardiac troponin-T/cTnT (red, Cat. No 15513-1-AP), CD31/PECAM-1 (magenta), and Arl13B (green, Cat. No 66739-1-Ig) with DAPI as a counterstain for visualizing the nucleus (blue). cTnT stains cardiomyocytes and was visualized with an Alexa Fluor 555 secondary antibody. CD31 stains endocardial/endothelial cells and was visualized with an Alexa Fluor 647 secondary