

ERC1 Monoclonal antibody

Catalog Number: 66681-1-Ig **1 Publications**

Basic Information

Catalog Number:

66681-1-Ig

Size:

1200 µg/ml

Source:

Mouse

Isotype:

IgG1

Immunogen Catalog Number:

AG17665

GenBank Accession Number:

BC132782

GeneID (NCBI):

23085

UNIPROT ID:

Q8IUD2

Full Name:

ELKS/RAB6-interacting/CAST family member 1

Calculated MW:

1116 aa, 128 kDa

Observed MW:

135 kDa

Purification Method:

Protein G purification

CloneNo.:

2A5B9

Recommended Dilutions:

WB 1:5000-1:50000

Applications

Tested Applications:

WB, ELISA

Cited Applications:

WB

Species Specificity:

Human, Mouse, Rat

Cited Species:

canine

Positive Controls:

WB : HeLa cells, HEK-293 cells, HepG2 cells, Jurkat cells, HSC-T6, NIH/3T3 cells

Background Information

ERC is an acronym based on previous separate namings of members of this protein family, ELKS, Rab6IP2 and CAST (PMID: 12391317). They are known to bind RIMs, the active zone proteins that regulate neurotransmitter release. ERC1 (ELKS) is an essential regulatory subunit of the IKK complex and likely functions by recruiting IκBα to the complex (PMID: 15218148). Multiple isoforms of ERC1 mRNA are generated by alternative splicing (PMID: 12203787). There are two known splice variants of ERC1 protein that differ at their C termini, ERC1a and ERC1b. ERC1a is ubiquitously expressed, whereas ERC1b is brain-specific (PMID: 12391317; 12923177).

Notable Publications

Author	Pubmed ID	Journal	Application
Yuta Homma	34023780	Biochem Biophys Res Commun	WB

Storage

Storage:

Store at -20°C. Stable for one year after shipment.

Storage Buffer:

PBS with 0.02% sodium azide and 50% glycerol pH 7.3.

Aliquoting is unnecessary for -20°C storage

For technical support and original validation data for this product please contact:

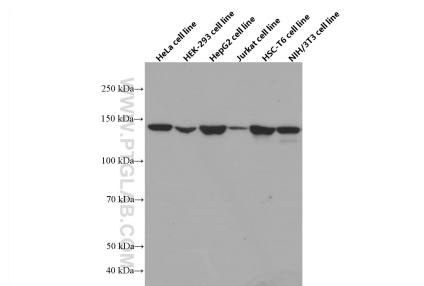
T: 4006900926

E: Proteintech-CN@ptglab.com

W: ptgcn.com

This product is exclusively available under Proteintech Group brand and is not available to purchase from any other manufacturer.

Selected Validation Data



Various lysates were subjected to SDS PAGE followed by western blot with 66681-1-Ig (ERC1 antibody) at dilution of 1:10000 incubated at room temperature for 1.5 hours.