

BBS10 Monoclonal antibody

Catalog Number: 66679-1-Ig

Basic Information

Catalog Number:

66679-1-Ig

Size:

1800 µg/ml

Source:

Mouse

Isotype:

IgG2b

Immunogen Catalog Number:

AG17960

GenBank Accession Number:

BC013795

GeneID (NCBI):

79738

UNIPROT ID:

Q8TAM1

Full Name:

Bardet-Biedl syndrome 10

Calculated MW:

81 kDa

Observed MW:

81 kDa

Purification Method:

Protein A purification

CloneNo.:

4C6A10

Recommended Dilutions:

WB 1:1000-1:6000

IHC 1:150-1:600

Applications

Tested Applications:

IHC, WB, ELISA

Species Specificity:

Human

**Note-IHC: suggested antigen retrieval with
TE buffer pH 9.0; (*) Alternatively, antigen
retrieval may be performed with citrate
buffer pH 6.0**

Positive Controls:

WB : NCI-H1299 cells, NCCIT cells, L02 cells, HepG2 cells

IHC : human liver cancer tissue,

Background Information

BBS10, also named as C12orf58, belongs to the TCP-1 chaperonin family. It is probable molecular chaperone. Assists the folding of proteins upon ATP hydrolysis. As part of the BBS/CCT complex, BBS10 may play a role in the assembly of BBSome, a complex involved in ciliogenesis regulating transports vesicles to the cilia. Involved in adipogenic differentiation. (PMID: 20080638, 19190184) Defects in BBS10 are the cause of Bardet-Biedl syndrome type 10 (BBS10).

Storage

Storage:

Store at -20°C. Stable for one year after shipment.

Storage Buffer:

PBS with 0.02% sodium azide and 50% glycerol pH 7.3.

Aliquoting is unnecessary for -20°C storage

For technical support and original validation data for this product please contact:

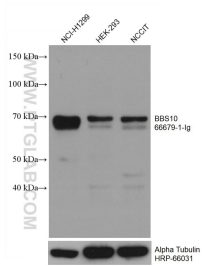
T: 4006900926

E: Proteintech-CN@ptglab.com

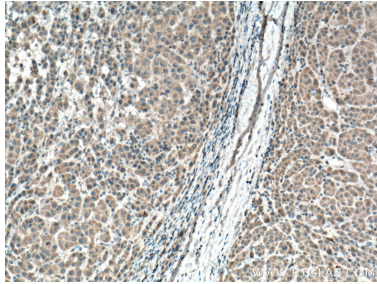
W: ptgcn.com

This product is exclusively available under Proteintech Group brand and is not available to purchase from any other manufacturer.

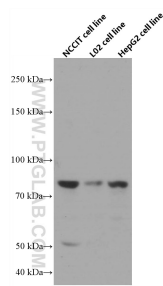
Selected Validation Data



Various lysates were subjected to SDS PAGE followed by western blot with 66679-1-Ig (BBS10 antibody) at dilution of 1:3000 incubated at room temperature for 1.5 hours. The membrane was stripped and reblotted with HRP-conjugated Alpha Tubulin Monoclonal antibody (HRP-66031) as loading control.



Immunohistochemical analysis of paraffin-embedded human liver cancer tissue slide using 66679-1-Ig (BBS10 antibody) at dilution of 1:300 (under 10x lens). Heat mediated antigen retrieval with Tris-EDTA buffer (pH 9.0).



Various lysates were subjected to SDS PAGE followed by western blot with 66679-1-Ig (BBS10 antibody) at dilution of 1:3000 incubated at room temperature for 1.5 hours.