

For Research Use Only

# ADAM10 Monoclonal antibody

Catalog Number: 66620-1-Ig



## Basic Information

<b>Catalog Number:</b> 66620-1-Ig	<b>GenBank Accession Number:</b> BC126253	<b>Purification Method:</b> Protein A purification
<b>Size:</b> 1500 µg/ml	<b>GeneID (NCBI):</b> 102	<b>CloneNo.:</b> 2A6B7
<b>Source:</b> Mouse	<b>UNIPROT ID:</b> O14672	<b>Recommended Dilutions:</b> WB 1:1000-1:6000 IHC 1:1000-1:4000
<b>Isotype:</b> IgG1	<b>Full Name:</b> ADAM metallopeptidase domain 10	
<b>Immunogen Catalog Number:</b> AG23062	<b>Calculated MW:</b> 748 aa, 84 kDa	
	<b>Observed MW:</b> 90-95 kDa	

## Applications

### Tested Applications:

IHC, WB, ELISA

### Species Specificity:

Human

**Note-IHC: suggested antigen retrieval with TE buffer pH 9.0; (\*) Alternatively, antigen retrieval may be performed with citrate buffer pH 6.0**

### Positive Controls:

WB : THP-1 cells, MCF-7 cells, Jurkat cells, K-562 cells

IHC : human prostate cancer tissue,

## Background Information

ADAM10, a member of the ADAM (a disintegrin and metalloprotease) family, is widely expressed in the brain, the spinal cord, and the visual system during development. MW of premature ADAM10 is 90 kDa and mature ADAM10 is 60-70 kDa (PMID: 24404179).

## Storage

### Storage:

Store at -20°C. Stable for one year after shipment.

### Storage Buffer:

PBS with 0.02% sodium azide and 50% glycerol pH 7.3.

Aliquoting is unnecessary for -20°C storage

For technical support and original validation data for this product please contact:

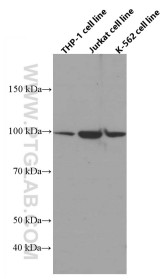
T: 4006900926

E: [Proteintech-CN@ptglab.com](mailto:Proteintech-CN@ptglab.com)

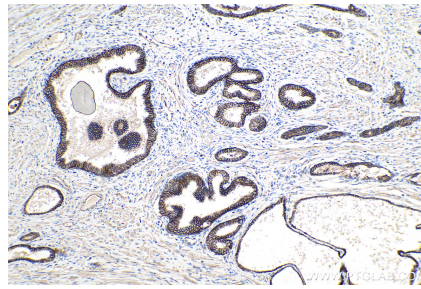
W: [ptgcn.com](http://ptgcn.com)

**This product is exclusively available under Proteintech Group brand and is not available to purchase from any other manufacturer.**

## Selected Validation Data



Various lysates were subjected to SDS PAGE followed by western blot with 66620-1-Ig (ADAM10 antibody) at dilution of 1:3000 incubated at room temperature for 1.5 hours.



Immunohistochemical analysis of paraffin-embedded human prostate cancer tissue slide using 66620-1-Ig (ADAM10 antibody) at dilution of 1:2000 (under 10x lens). Heat mediated antigen retrieval with Tris-EDTA buffer (pH 9.0).