

ACAP1 Monoclonal antibody

 Catalog Number: **66596-1-Ig** **1 Publications**

Basic Information

| | | |
|---|---|--|
| Catalog Number: 66596-1-Ig | GenBank Accession Number: BC018543 | Purification Method: Protein G purification |
| Size: 1600 µg/ml | GeneID (NCBI): 9744 | CloneNo.: 1B4C9 |
| Source: Mouse | UNIPROT ID: Q15027 | Recommended Dilutions: WB 1:1000-1:6000 IHC 1:150-1:600 |
| Isotype: IgG1 | Full Name: ArfGAP with coiled-coil, ankyrin repeat and PH domains 1 | |
| Immunogen Catalog Number: AG14254 | Calculated MW: 740 aa, 82 kDa | |
| | Observed MW: 81 kDa | |

Applications

| | |
|--|--|
| Tested Applications: IHC, WB, ELISA | Positive Controls: |
| Cited Applications: WB | WB : Jurkat cells, HL-60 cells, K-562 cells |
| Species Specificity: Human | IHC : human breast cancer tissue, |
| Cited Species: human | |
| Note-IHC: suggested antigen retrieval with TE buffer pH 9.0; (*) Alternatively, antigen retrieval may be performed with citrate buffer pH 6.0 | |

Background Information

ACAP1, also named as Centaurin-beta-1, is a 740 amino acid protein, which is expressed Highly in lung and spleen. ACAP1 as a GTPase-activating protein (GAP) for ADP ribosylation factor 6 (ARF6) is required for clathrin-dependent export of proteins from recycling endosomes to trans-Golgi network and cell surface and required for regulated export of ITGB1 from recycling endosomes to the cell surface and ITGB1-dependent cell migration.

Notable Publications

| Author | Pubmed ID | Journal | Application |
|---------|-----------|-----------------|-------------|
| Qiyi Yi | 36497434 | Cancers (Basel) | WB |

Storage

Storage:
Store at -20°C. Stable for one year after shipment.
Storage Buffer:
PBS with 0.02% sodium azide and 50% glycerol pH 7.3.
 Aliquoting is unnecessary for -20°C storage

For technical support and original validation data for this product please contact:

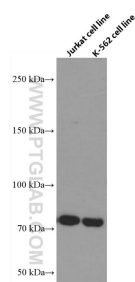
T: 4006900926

 E: Proteintech-CN@ptglab.com

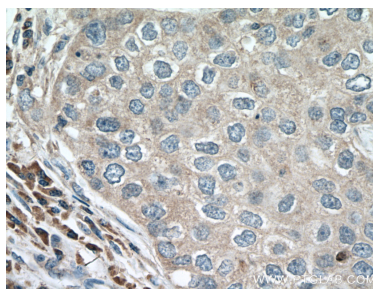
 W: ptgcn.com

This product is exclusively available under Proteintech Group brand and is not available to purchase from any other manufacturer.

Selected Validation Data



Various lysates were subjected to SDS PAGE followed by western blot with 66596-1-Ig (ACAP1 antibody) at dilution of 1:3000 incubated at room temperature for 1.5 hours.



Immunohistochemical analysis of paraffin-embedded human breast cancer tissue slide using 66596-1-Ig (ACAP1 antibody) at dilution of 1:300 (under 40x lens. Heat mediated antigen retrieval with Tris-EDTA buffer (pH 9.0)).