

# PEDF Monoclonal antibody

Catalog Number: 66554-1-Ig

## Basic Information

**Catalog Number:**

66554-1-Ig

**Size:**

1000 µg/ml

**Source:**

Mouse

**Isotype:**

IgG1

**Immunogen Catalog Number:**

AG26660

**GenBank Accession Number:**

BC013984

**GeneID (NCBI):**

5176

**UNIPROT ID:**

P36955

**Full Name:**serpin peptidase inhibitor, clade F  
(alpha-2 antiplasmin, pigment  
epithelium derived factor), member 1**Calculated MW:**

418 aa, 46 kDa

**Observed MW:**

46-50 kDa

**Purification Method:**

Protein A purification

**CloneNo.:**

2C5C8

**Recommended Dilutions:**

WB 1:2000-1:10000

## Applications

**Tested Applications:**

WB, ELISA

**Species Specificity:**

Human, pig

**Positive Controls:**WB : human plasma tissue, pig plasma tissue, human  
blood tissue

## Background Information

PEDF also known as serpin F1 (SERPINF1), is a multifunctional secreted protein that has anti-angiogenic, anti-tumorigenic, and neurotrophic functions. It is an approximately 50-kDa secreted protein that is widely expressed, including by osteoblasts and osteoclasts. PEDF is also one of the most abundant secretory products of adipocytes, and circulating concentrations of PEDF correlate positively with body fat mass and INS resistance. PEDF is a neurotrophic factor involved in neuronal differentiation in retinoblastoma cells. Mutations in this gene were found in individuals with osteogenesis imperfecta, type VI.

## Storage

**Storage:**

Store at -20°C. Stable for one year after shipment.

**Storage Buffer:**

PBS with 0.02% sodium azide and 50% glycerol pH 7.3.

Aliquoting is unnecessary for -20°C storage

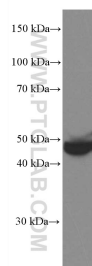
For technical support and original validation data for this product please contact:

T: 4006900926

E: [Proteintech-CN@ptglab.com](mailto:Proteintech-CN@ptglab.com)W: [ptgcn.com](http://ptgcn.com)

This product is exclusively available under Proteintech Group brand and is not available to purchase from any other manufacturer.

## Selected Validation Data



human plasma were subjected to SDS PAGE followed by western blot with 66554-1-Ig (PEDF antibody) at dilution of 1:5000 incubated at room temperature for 1.5 hours.