

For Research Use Only

SOX2 Monoclonal antibody

Catalog Number: 66411-1-Ig

Featured Product

51 Publications



Basic Information

Catalog Number:

66411-1-Ig

Concentration:

2000 ug/ml

Source:

Mouse

Isotype:

IgG1

Immunogen Catalog Number:

AG13635

GenBank Accession Number:

BC013923

GeneID (NCBI):

6657

UNIPROT ID:

P48431

Full Name:

SRY (sex determining region Y)-box 2

Calculated MW:

34 kDa

Observed MW:

34-40 kDa

Purification Method:

Protein G purification

CloneNo.:

4B9B10

Recommended Dilutions:

WB: 1:1000-1:5000

IHC: 1:50-1:500

IF-P: 1:500-1:2000

IF/ICC: 1:1000-1:4000

FC (Intra): 0.50 ug per 10⁶ cells in a 100 µl suspension

Applications

Tested Applications:

WB, IHC, IF/ICC, IF-P, FC (Intra), ELISA

Cited Applications:

WB, IHC, IF

Species Specificity:

human, mouse, rat, pig

Cited Species:

human, mouse, rat, rabbit

Note-IHC: suggested antigen retrieval with TE buffer pH 9.0; (*) Alternatively, antigen retrieval may be performed with citrate buffer pH 6.0

Positive Controls:

WB: U-251 cells, HEK-293 cells, MCF-7 cells, fetal human brain tissue, pig brain tissue, C6 cells

IHC: human lung cancer tissue, mouse brain tissue, mouse embryo tissue

IF-P: mouse brain tissue,

IF/ICC: U-251 cells,

FC (Intra): U-251 cells,

Background Information

Sox2, also known as SRY (sex determining region Y)-box 2, is a transcription factor essential for maintaining self-renewal of undifferentiated ES cells and is one of the key transcription factors used to reprogram mouse and human fibroblasts to a pluripotent state. Sox2 expressed in undifferentiated pluripotent stem cells and germ cells during development. This antibody is raised against an internal region of human SOX2.

Notable Publications

Author	Pubmed ID	Journal	Application
Qian Luo	36175708	Med Oncol	WB
Shuai Yu	34616727	Front Cell Dev Biol	WB
Liang Cao	36159391	Front Cell Neurosci	WB,IF

Storage

Storage:

Store at -20°C. Stable for one year after shipment.

Storage Buffer:

PBS with 0.02% sodium azide and 50% glycerol, pH7.3

Aliquoting is unnecessary for -20°C storage

For technical support and original validation data for this product please contact:

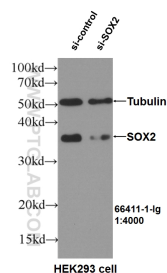
T: 4006900926

E: Proteintech-CN@ptglab.com

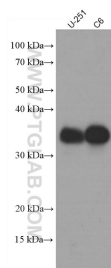
W: ptgcn.com

This product is exclusively available under Proteintech Group brand and is not available to purchase from any other manufacturer.

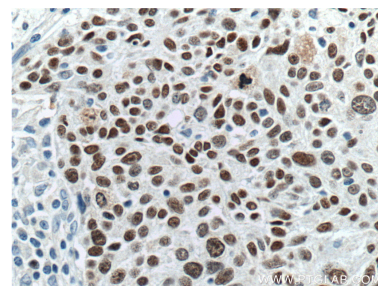
Selected Validation Data



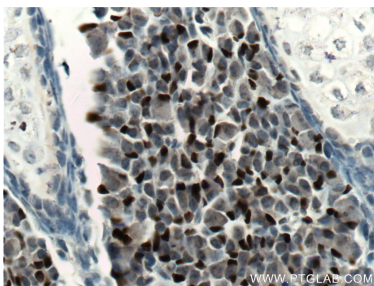
WB result of SOX2 antibody (66411-1-Ig, 1:4000) with si-Control and si-SOX2 transfected HEK293 cells..



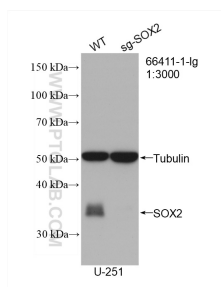
Various lysates were subjected to SDS PAGE followed by western blot with 66411-1-Ig (SOX2 antibody) at dilution of 1:2500 incubated at room temperature for 1.5 hours.



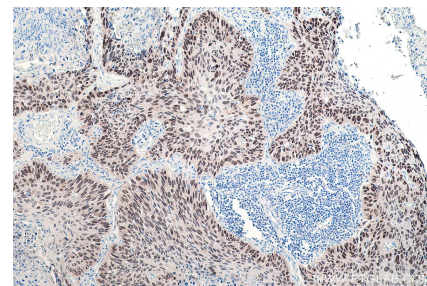
Immunohistochemical analysis of paraffin-embedded human lung cancer tissue slide using 66411-1-Ig (SOX2 Antibody) at dilution of 1:500 (under 40x lens). Heat mediated antigen retrieval with Tris-EDTA buffer (pH 9.0).



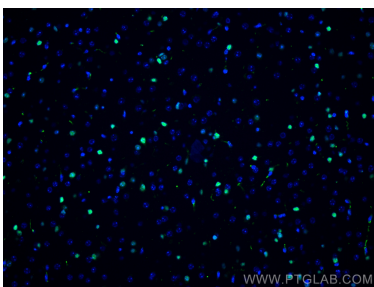
Immunohistochemical analysis of paraffin-embedded mouse embryo tissue slide using 66411-1-Ig (SOX2 Antibody) at dilution of 1:500 (under 40x lens). Heat mediated antigen retrieval with Tris-EDTA buffer (pH 9.0).



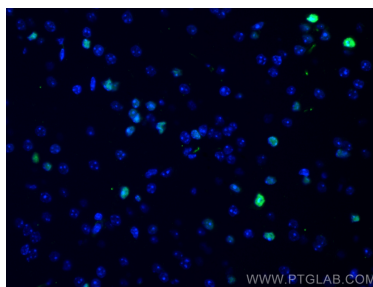
WB result of SOX2 antibody (66411-1-Ig; 1:3000; room temperature for 1.5 hours) with negative control and SOX2 knockout U-251 cells.



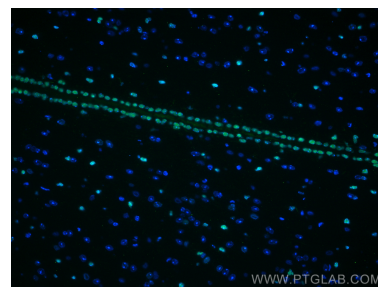
Immunohistochemical analysis of paraffin-embedded human lung cancer tissue slide using 66411-1-Ig (SOX2 antibody) at dilution of 1:8000 (under 10x lens). Heat mediated antigen retrieval with Tris-EDTA buffer (pH 9.0).



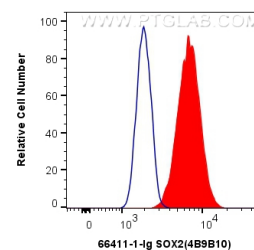
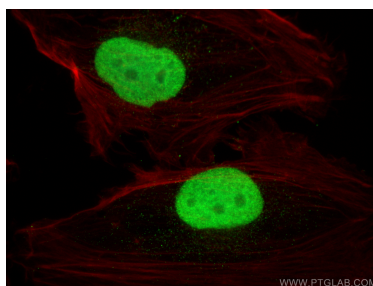
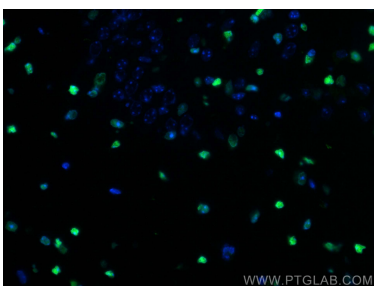
Immunofluorescent analysis of (4% PFA) fixed mouse brain tissue using SOX2 antibody (66411-1-Ig, Clone: 4B9B10) at dilution of 1:1000 and CoraLite®488-Conjugated AffiniPure Goat Anti-Mouse IgG(H+L).



Immunofluorescent analysis of (4% PFA) fixed mouse brain tissue using SOX2 antibody (66411-1-Ig, Clone: 4B9B10) at dilution of 1:1000 and CoraLite®488-Conjugated AffiniPure Goat Anti-Mouse IgG(H+L).



Immunofluorescent analysis of (4% PFA) fixed mouse brain tissue using SOX2 antibody (66411-1-Ig, Clone: 4B9B10) at dilution of 1:400 and CoraLite®488-Conjugated AffiniPure Goat Anti-Mouse IgG(H+L).



Immunofluorescent analysis of (4% PFA) fixed mouse brain tissue using SOX2 antibody (66411-1-Ig, Clone: 4B9B10) at dilution of 1:400 and CoraLite®488-Conjugated AffiniPure Goat Anti-Mouse IgG(H+L).

Immunofluorescent analysis of (4% PFA) fixed U-251 cells using SOX2 antibody (66411-1-Ig, Clone: 4B9B10) at dilution of 1:2000 and Multi-rAb CoraLite ® Plus 488-Goat Anti-Mouse Recombinant Secondary Antibody (H+L) (RGAM002), CL594-Phalloidin (red).

1X10⁶ U-251 cells were intracellularly stained with 0.5 ug Anti-Human SOX2 (66411-1-Ig, Clone:4B9B10) (red) labeled with FlexAble CoraLite® Plus 555 Antibody Labeling Kit for Mouse IgG1 (KFA022), or 0.5 ug Control Antibody. Cells were fixed and permeabilized with Transcription Factor Staining Buffer Kit (PF00011).