

PLA2G1B Monoclonal antibody

Catalog Number: 66397-1-Ig

Basic Information

Catalog Number:	GenBank Accession Number:	Purification Method:
66397-1-Ig	BC005386	Protein A purification
Size:	GeneID (NCBI):	CloneNo.:
1700 µg/ml	5319	1F2C10
Source:	UNIPROT ID:	Recommended Dilutions:
Mouse	P04054	WB 1:1000-1:6000
Isotype:	Full Name:	IHC 1:100-1:400
IgG2a	phospholipase A2, group IB (pancreas)	
Immunogen Catalog Number:	Calculated MW:	
AG8812	70aa, 8 kDa; 148aa, 16 kDa	
	Observed MW:	
	13-16 kDa	

Applications

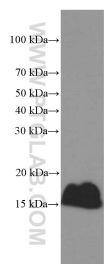
Tested Applications:	Positive Controls:
IHC, WB, ELISA	WB : pig pancreas tissue,
Species Specificity:	IHC : human pancreas tissue,
human, pig	
Note-IHC: suggested antigen retrieval with TE buffer pH 9.0; (*) Alternatively, antigen retrieval may be performed with citrate buffer pH 6.0	

Background Information

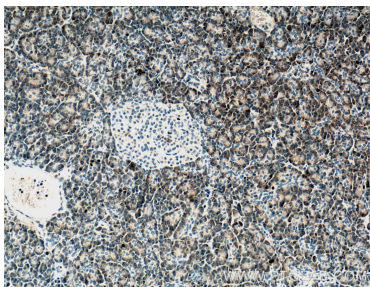
Storage

Storage:
Store at -20°C. Stable for one year after shipment.
Storage Buffer:
PBS with 0.02% sodium azide and 50% glycerol pH 7.3.
Aliquoting is unnecessary for -20°C storage

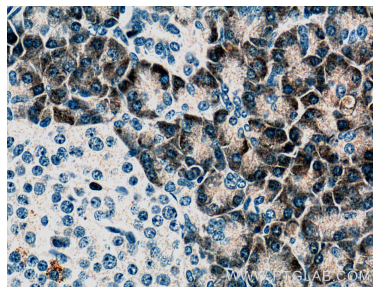
Selected Validation Data



pig pancreas tissue were subjected to SDS PAGE followed by western blot with 66397-1-Ig (PLA2G1B Antibody) at dilution of 1:3000 incubated at room temperature for 1.5 hours.



Immunohistochemical analysis of paraffin-embedded human pancreas tissue slide using 66397-1-Ig (PLA2G1B antibody) at dilution of 1:200 (under 10x lens).



Immunohistochemical analysis of paraffin-embedded human pancreas tissue slide using 66397-1-Ig (PLA2G1B antibody) at dilution of 1:200 (under 40x lens).