

# CDK6 Monoclonal antibody

Catalog Number: 66278-1-Ig

Featured Product

13 Publications

## Basic Information

Catalog Number:

66278-1-Ig

Size:

1100 µg/ml

Source:

Mouse

Isotype:

IgG1

Immunogen Catalog Number:

AG5600

GenBank Accession Number:

BC027989

GeneID (NCBI):

1021

UNIPROT ID:

Q00534

Full Name:

cyclin-dependent kinase 6

Calculated MW:

326 aa, 36 kDa

Observed MW:

36-40 kDa

Purification Method:

Protein A purification

CloneNo.:

4B9C11

Recommended Dilutions:

WB 1:5000-1:50000

IF 1:20-1:200

## Applications

Tested Applications:

IF/ICC, WB, ELISA

Cited Applications:

IF, IHC, WB

Species Specificity:

human, mouse, rat

Cited Species:

human, mouse

Positive Controls:

WB : HEK-293 cells, COLO 320 cells, Jurkat cells, THP-1 cells, ROS1728 cells, HeLa cells, NIH/3T3 cells, HepG2 cells, K-562 cells, HSC-T6 cells, C6 cells, Raw 264.7 cells

IF : HeLa cells,

## Background Information

CDK6(Cyclin-dependent kinase 6) is involved in initiation and maintenance of cell cycle exit during cell differentiation and it prevents cell proliferation and regulates negatively cell differentiation, but is required for the proliferation of specific cell types. The molecular weight of CDK6 is 36-40 kDa (PMID: 23563707, 8114739).

## Notable Publications

Author	Pubmed ID	Journal	Application
Huan Liu	34491469	Med Oncol	WB
Chenxiang Qi	34650666	Oxid Med Cell Longev	WB
Huan Yue	35543858	Cell Oncol (Dordr)	WB

## Storage

Storage:

Store at -20°C. Stable for one year after shipment.

Storage Buffer:

PBS with 0.02% sodium azide and 50% glycerol pH 7.3.

Aliquoting is unnecessary for -20°C storage

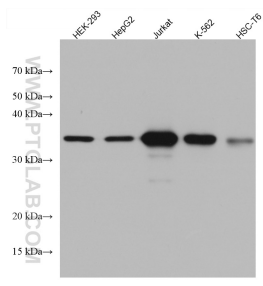
For technical support and original validation data for this product please contact:

T: 4006900926

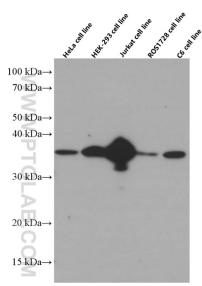
E: [Proteintech-CN@ptglab.com](mailto:Proteintech-CN@ptglab.com)W: [ptgcn.com](http://ptgcn.com)

This product is exclusively available under Proteintech Group brand and is not available to purchase from any other manufacturer.

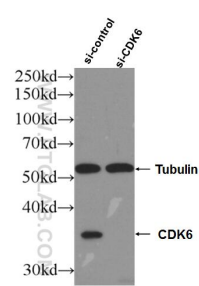
Selected Validation Data



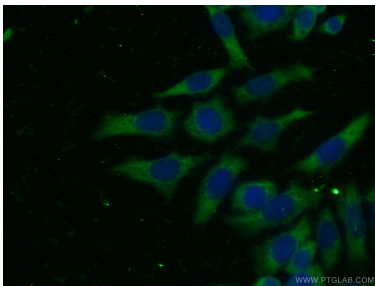
Various lysates were subjected to SDS PAGE followed by western blot with 66278-1-Ig (CDK6 antibody) at dilution of 1:10000 incubated at room temperature for 1.5 hours.



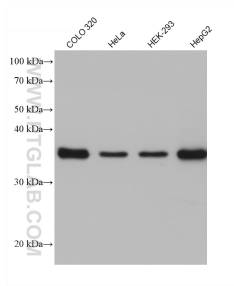
Various lysates were subjected to SDS PAGE followed by western blot with 66278-1-Ig (CDK6 antibody) at dilution of 1:50000 incubated at room temperature for 1.5 hours.



WB result of CDK6 antibody (66278-1-Ig; 1:10000; incubated at room temperature for 1.5 hours) with sh-Control and sh-CDK6 transfected HEK-293 cells.



Immunofluorescent analysis of (-20℃ Ethanol ) fixed HeLa cells using 66278-1-Ig(CDK6 antibody) at dilution of 1:100 and Alexa Fluor 488-conjugated AffiniPure Goat Anti-Mouse IgG(H+L).



Various lysates were subjected to SDS PAGE followed by western blot with 66278-1-Ig (CDK6 antibody) at dilution of 1:10000 incubated at room temperature for 1.5 hours.