

For Research Use Only

# FRS2 Monoclonal antibody

Catalog Number: 66263-1-Ig



## Basic Information

<b>Catalog Number:</b> 66263-1-Ig	<b>GenBank Accession Number:</b> BC021562	<b>Purification Method:</b> Protein A purification
<b>Size:</b> 3100 µg/ml	<b>GeneID (NCBI):</b> 10818	<b>CloneNo.:</b> 4E10H12
<b>Source:</b> Mouse	<b>UNIPROT ID:</b> Q8WU20	<b>Recommended Dilutions:</b> WB 1:500-1:2000 IHC 1:50-1:500 IF 1:200-1:800
<b>Isotype:</b> IgG3	<b>Full Name:</b> fibroblast growth factor receptor substrate 2	
<b>Immunogen Catalog Number:</b> AG19299	<b>Calculated MW:</b> 60 kDa	
	<b>Observed MW:</b> 68 kDa	

## Applications

<b>Tested Applications:</b> IF/ICC, IHC, WB, ELISA	<b>Positive Controls:</b> WB : MCF-7 cells, HEK-293 cells, HeLa cells IHC : human prostate cancer tissue, IF : MCF-7 cells,
<b>Species Specificity:</b> human	
<b>Note-IHC: suggested antigen retrieval with TE buffer pH 9.0; (*) Alternatively, antigen retrieval may be performed with citrate buffer pH 6.0</b>	

## Background Information

Fibroblast growth factor (FGF) receptor substrate 2 (FRS2) has an alternative name as SNT-1, it is an adapter protein that links activated FGR and NGF receptors to downstream signaling pathways. FGF receptor substrates (FRS2 and FRS3) are key adaptor proteins that mediate FGF-FGFR signalling in benign as well as malignant tissue. FRS2 is a 508 amino-acid protein, which is phosphorylated on tyrosine residues. The molecular weight of non-phosphorylated FRS2 is 57-68 kDa, but phosphorylated FRS2 is 80-90 kDa. Phosphorylation of FRS2 is associated with activation of a number of MAP kinases. Allele-specific regulation of FGFR2 mRNA expression with a mildly increased breast cancer risk has been reported.

## Storage

**Storage:**  
Store at -20°C. Stable for one year after shipment.  
**Storage Buffer:**  
PBS with 0.02% sodium azide and 50% glycerol pH 7.3.  
Aliquoting is unnecessary for -20°C storage

For technical support and original validation data for this product please contact:

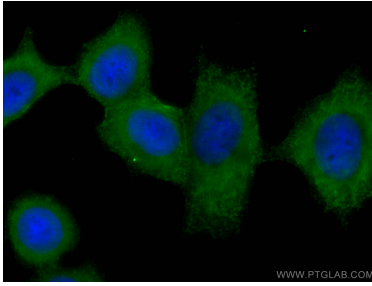
T: 4006900926

E: Proteintech-CN@ptglab.com

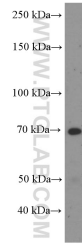
W: ptgcn.com

This product is exclusively available under Proteintech Group brand and is not available to purchase from any other manufacturer.

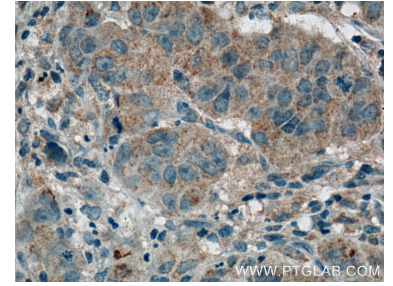
## Selected Validation Data



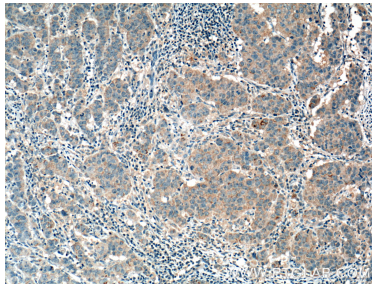
Immunofluorescent analysis of (-20°C Ethanol) fixed MCF-7 cells using FRS2 antibody (66263-1-Ig, Clone: 4E10H12) at dilution of 1:400 and CoraLite®488-Conjugated AffiniPure Goat Anti-Mouse IgG(H+L).



MCF-7 cells were subjected to SDS PAGE followed by western blot with 66263-1-Ig (FRS2 antibody) at dilution of 1:1000 incubated at room temperature for 1.5 hours.



Immunohistochemical analysis of paraffin-embedded human prostate cancer tissue slide using 66263-1-Ig (FRS2 Antibody) at dilution of 1:400 (under 40x lens). Heat mediated antigen retrieval with Tris-EDTA buffer (pH 9.0).



Immunohistochemical analysis of paraffin-embedded human prostate cancer tissue slide using 66263-1-Ig (FRS2 Antibody) at dilution of 1:400 (under 10x lens). Heat mediated antigen retrieval with Tris-EDTA buffer (pH 9.0).