

For Research Use Only

BBS2 Monoclonal antibody, PBS Only

Catalog Number: 66246-1-PBS



Basic Information

Catalog Number:

66246-1-PBS

Size:

1 mg/ml

Source:

Mouse

Isotype:

IgG3

Immunogen Catalog Number:

AG21390

GenBank Accession Number:

BC014140

GeneID (NCBI):

583

UNIPROT ID:

Q9BXC9

Full Name:

Bardet-Biedl syndrome 2

Calculated MW:

80 kDa

Observed MW:

80-90 kDa

Purification Method:

Protein A purification

CloneNo.:

2E11B3

Applications

Tested Applications:

WB, Indirect ELISA, IF

Species Specificity:

human, Canine

Background Information

Storage

Storage:

Store at -80°C.

Storage Buffer:

PBS Only

For technical support and original validation data for this product please contact:

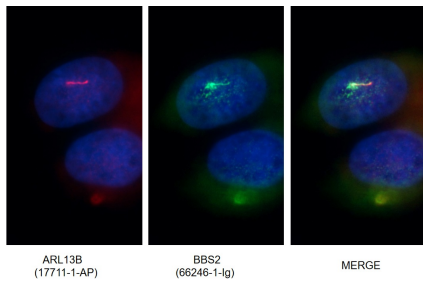
T: 4006900926

E: Proteintech-CN@ptglab.com

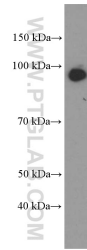
W: ptgcn.com

This product is exclusively available under Proteintech Group brand and is not available to purchase from any other manufacturer.

Selected Validation Data



Immunofluorescent images of MDCK cells stained with BBS2 mouse mAb (66246-1-Ig) and ARL13B rabbit pAb (17711-1-AP) at dilution of 1:50, further stained with Alexa Fluor 488-conjugated AffiniPure-Goat anti-Mouse IgG (H+L) for 66246-1-Ig, and Alexa Fluor 594-conjugated AffiniPure Goat Anti-Rabbit IgG (H+L) for 17711-1-AP. This data was developed using the same antibody clone with 66246-1-PBS in a different storage buffer formulation.



K-562 cells were subjected to SDS PAGE followed by western blot with 66246-1-Ig (BBS2 Antibody) at dilution of 1:1000 incubated at room temperature for 1.5 hours. This data was developed using the same antibody clone with 66246-1-PBS in a different storage buffer formulation.