

For Research Use Only

BMI1 Monoclonal antibody, PBS Only



Catalog Number: 66161-1-PBS

Featured Product

Basic Information

Catalog Number: 66161-1-PBS	GenBank Accession Number: BC011652	Purification Method: Protein A purification
Size: 1 mg/ml	GeneID (NCBI): 648	CloneNo.: 2E10A11
Source: Mouse	UNIPROT ID: P35226	
Isotype: IgG2b	Full Name: BMI1 polycomb ring finger oncogene	
Immunogen Catalog Number: AG21284	Calculated MW: 37 kDa	
	Observed MW: 37-43 kDa	

Applications

Tested Applications:
WB,IP,IHC,IF,ELISA

Species Specificity:
human, mouse, monkey

Background Information

BMI-1 is one of polycomb group genes, which together with Ring1 strongly enhances the E3 ubiquitin ligase activity of the Ring2 catalytic subunit. Bmi1 plays an important role in the regulation of cell proliferation and senescence through repression of the p16Ink4a and p19Arf genes and is required for maintenance of adult hematopoietic and neural stem cells. The antibody reacts with the 37kd BMI1 protein.

Storage

Storage:
Store at -20°C. Stable for one year after shipment.

Storage Buffer:
PBS only

Aliquoting is unnecessary for -20°C storage

For technical support and original validation data for this product please contact:

T: 4006900926

E: Proteintech-CN@ptglab.com

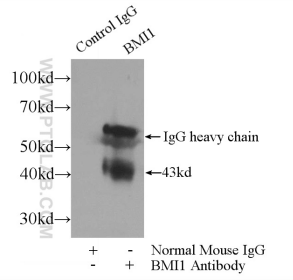
W: ptgcn.com

This product is exclusively available under Proteintech Group brand and is not available to purchase from any other manufacturer.

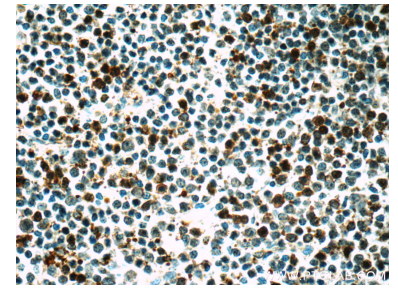
Selected Validation Data



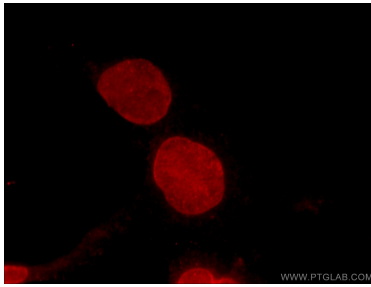
PC-12 cells were subjected to SDS PAGE followed by western blot with 66161-1-Ig (BMI 1 antibody) at dilution of 1:1500 incubated at room temperature for 1.5 hours. This data was developed using the same antibody clone with 66161-1-PBS in a different storage buffer formulation.



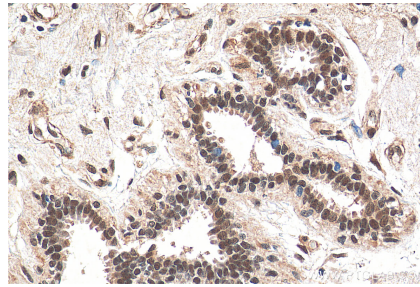
IP result of anti-BMI1 (IP:66161-1-Ig, 3ug; Detection:66161-1-Ig 1:1000) with HEK-293 cells lysate 1800ug. This data was developed using the same antibody clone with 66161-1-PBS in a different storage buffer formulation.



Immunohistochemical analysis of paraffin-embedded human lymphoma tissue slide using 66161-1-Ig (BMI1 Antibody) at dilution of 1:50 under 40x lens. This data was developed using the same antibody clone with 66161-1-PBS in a different storage buffer formulation.



Immunofluorescent analysis of COS-7 cells using 66161-1-Ig (BMI1 antibody) at dilution of 1:25 and Rhodamine-Goat anti-Mouse IgG. This data was developed using the same antibody clone with 66161-1-PBS in a different storage buffer formulation.



Immunohistochemical analysis of paraffin-embedded human breast cancer tissue slide using 66161-1-Ig (BMI1 antibody) at dilution of 1:200 (under 40x lens). Heat mediated antigen retrieval with Tris-EDTA buffer (pH 9.0). This data was developed using the same antibody clone with 66161-1-PBS in a different storage buffer formulation.