

For Research Use Only

Fibronectin Monoclonal antibody

Catalog Number: 66042-1-Ig

Featured Product

132 Publications



Basic Information

Catalog Number:

66042-1-Ig

Concentration:

1000 ug/ml

Source:

Mouse

Isotype:

IgG1

Immunogen Catalog Number:

AG8016

GenBank Accession Number:

BC005858

GeneID (NCBI):

2335

UNIPROT ID:

P02751

Full Name:

fibronectin 1

Calculated MW:

2386 aa, 263 kDa

Observed MW:

263 kDa

Purification Method:

Protein G purification

CloneNo.:

1G10F9

Recommended Dilutions:

WB: 1:2000-1:12000

IP: 0.5-4.0 ug for 1.0-3.0 mg of total protein lysate

IHC: 1:300-1:1200

IF-P: 1:200-1:800

IF/ICC: 1:200-1:800

Applications

Tested Applications:

WB, IHC, IF/ICC, IF-P, IP, ELISA

Cited Applications:

WB, IHC, IF, IP, CoIP, Cell treatment

Species Specificity:

human, mouse, rat

Cited Species:

human, mouse, rat, sheep

Note-IHC: suggested antigen retrieval with TE buffer pH 9.0; (*) Alternatively, antigen retrieval may be performed with citrate buffer pH 6.0

Positive Controls:

WB: human plasma tissue, human plasma, rat serum, HuH-7 cells, HepG2 cells, MG-63 cells, U2OS cells

IP: human plasma tissue,

IHC: human colon cancer tissue, human breast cancer tissue

IF-P: human colon cancer tissue,

IF/ICC: NIH/3T3 cells,

Background Information

Fibronectin 1 (FN1) is a high molecular weight glycoprotein which exists in both a soluble form in plasma (plasma FN1) and other body fluids and an insoluble form in the extracellular matrix (cellular FN1). Plasma FN1 (dimeric form) is secreted by hepatocytes. Cellular FN (dimeric or cross-linked multimeric forms), made by fibroblasts, epithelial and other cell types, is deposited as fibrils in the extracellular matrix. FN1 binds to cell surfaces through integrins and to various compounds including collagen, fibrin and heparin. It is involved in cell adhesion and migration processes including embryogenesis, wound healing, hemostasis, host defense, and metastasis. (PMID: 7276612; 12244123; 12847088)

Notable Publications

Author	Pubmed ID	Journal	Application
Fan Zhang	34597680	Exp Cell Res	WB, IHC, IF
Yao Liu	36169036	Phytochemistry	WB
Silvia Specia	34529707	PLoS One	WB

Storage

Storage:

Store at -20°C. Stable for one year after shipment.

Storage Buffer:

PBS with 0.02% sodium azide and 50% glycerol, pH7.3

Aliquoting is unnecessary for -20°C storage

For technical support and original validation data for this product please contact:

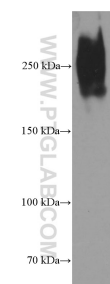
T: 4006900926

E: Proteintech-CN@ptglab.com

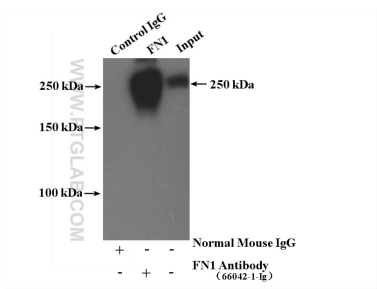
W: ptgcn.com

This product is exclusively available under Proteintech Group brand and is not available to purchase from any other manufacturer.

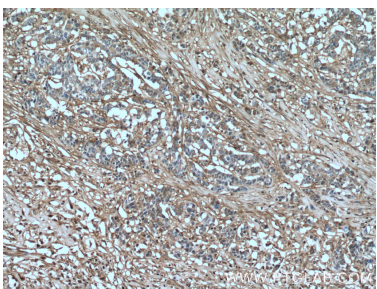
Selected Validation Data



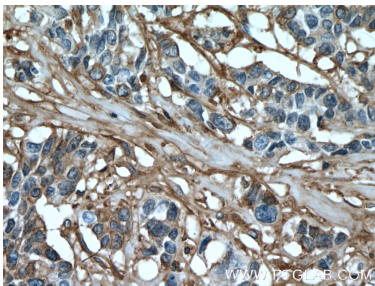
human plasma were subjected to SDS PAGE followed by western blot with 66042-1-Ig (Fibronectin antibody at dilution of 1:6000 incubated at room temperature for 1.5 hours.



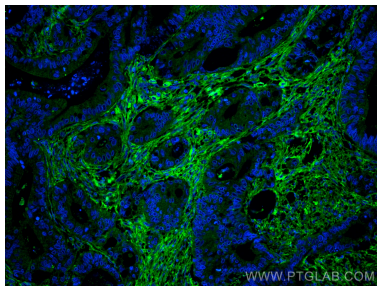
IP result of anti-Fibronectin (IP:66042-1-Ig, 5ug; Detection:66042-1-Ig 1:500) with human plasma lysate 4000ug.



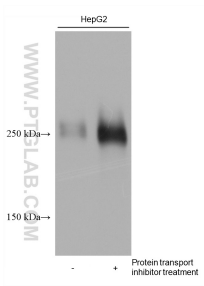
Immunohistochemical analysis of paraffin-embedded human colon cancer tissue slide using 66042-1-Ig (Fibronectin antibody) at dilution of 1:600 (under 10x lens. Heat mediated antigen retrieval with Tris-EDTA buffer (pH 9.0).



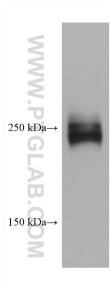
Immunohistochemical analysis of paraffin-embedded human colon cancer tissue slide using 66042-1-Ig (Fibronectin antibody) at dilution of 1:600 (under 40x lens. Heat mediated antigen retrieval with Tris-EDTA buffer (pH 9.0).



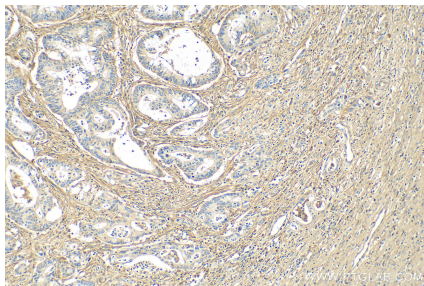
Immunofluorescent analysis of (4% PFA) fixed human colon cancer tissue using Fibronectin antibody (66042-1-Ig, Clone: 1G10F9) at dilution of 1:400 and CoraLite®488-Conjugated AffiniPure Goat Anti-Mouse IgG(H+L).



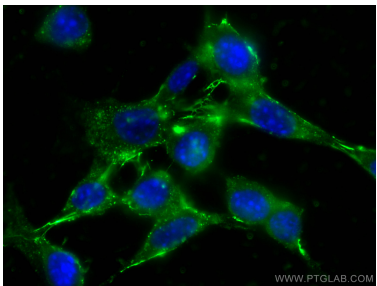
Various lysates were subjected to SDS PAGE followed by western blot with 66042-1-Ig (Fibronectin antibody) at dilution of 1:10000 incubated at room temperature for 1.5 hours.



HuH-7 cells were subjected to SDS PAGE followed by western blot with 66042-1-Ig (Fibronectin antibody) at dilution of 1:10000 incubated at room temperature for 1.5 hours.



Immunohistochemical analysis of paraffin-embedded human colon cancer tissue slide using 66042-1-Ig (Fibronectin antibody) at dilution of 1:800 (under 10x lens). Heat mediated antigen retrieval with Tris-EDTA buffer (pH 9.0).



Immunofluorescent analysis of (-20°C Ethanol) fixed NIH/3T3 cells using Fibronectin antibody (66042-1-Ig, Clone: 1G10F9) at dilution of 1:400 and CoraLite®488-Conjugated AffiniPure Goat Anti-Mouse IgG(H+L).