

For Research Use Only

Anti-Human CD45RA (F8-11-13)

Catalog Number: 65226-1-Ig



Basic Information

Catalog Number: 65226-1-Ig	GenBank Accession Number: BC014239	Purification Method: Affinity purification
Size: 100ug, 0.5 mg/ml	GeneID (NCBI): 5788	CloneNo.: F8-11-13
Source: Mouse	ENSEMBL Gene ID: ENSG00000081237	
Isotype: IgG1, kappa	UNIPROT ID: P08575	
	Full Name: protein tyrosine phosphatase, receptor type, C	
	Calculated MW: 1304 aa, 147 kDa	

Applications

Tested Applications:
FC

Species Specificity:
Human

Background Information

CD45, also known as protein tyrosine phosphatase, receptor type C, is a type I transmembrane protein expressed on the surface of all haematopoietic cells with the exception of erythrocytes and platelets (PMID: 3489673; 28615666). CD45 is a pan-haematopoietic cell marker and has been shown to be essential for T- and B-cell activation and signalling (PMID: 9429890; 16378097). CD45 exists as multiple isoforms due to alternative splicing of three exons (4, 5, and 6, designated A, B, and C) in the extracellular domain (PMID: 12414720). CD45RA is expressed on naïve T cells, B cells, and monocytes (PMID: 1830500; 14687231).

Storage

Storage:
Store at 2-8°C. Stable for one year after shipment.

Storage Buffer:
PBS with 0.09% sodium azide.

For technical support and original validation data for this product please contact:

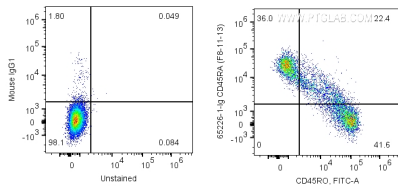
T: 4006900926

E: Proteintech-CN@ptglab.com

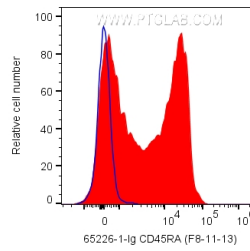
W: ptgcn.com

This product is exclusively available under Proteintech Group brand and is not available to purchase from any other manufacturer.

Selected Validation Data



1X10⁶ human PBMCs were surface co-stained with PE Anti-human CD3, FITC Anti-human CD45RO, and 0.2 ug Anti-Human CD45RA (65226-1-Ig, Clone: F8-11-13) labeled with FlexAble CoraLite® Plus 647 Antibody Labeling Kit for Mouse IgG1 (KFA023) or Mouse IgG1 Isotype Control. Cells were not fixed. CD3+ lymphocytes were gated.



1X10⁶ human PBMCs were surface co-stained with PE Anti-human CD3 and 0.2 ug Anti-Human CD45RA (65226-1-Ig, Clone: F8-11-13) labeled with FlexAble CoraLite® Plus 647 Antibody Labeling Kit for Mouse IgG1 (KFA023) (red) or Mouse IgG1 Isotype Control. Cells were not fixed. CD3+ lymphocytes were gated.