

For Research Use Only

HADHA Monoclonal antibody

Catalog Number: 60250-1-Ig

Featured Product

7 Publications



Basic Information

Catalog Number:

60250-1-Ig

Size:

1400 µg/ml

Source:

Mouse

Isotype:

IgG1

Immunogen Catalog Number:

AG1211

GenBank Accession Number:

BC009235

GeneID (NCBI):

3030

UNIPROT ID:

P40939

Full Name:

hydroxyacyl-Coenzyme A dehydrogenase/3-ketoacyl-Coenzyme A thiolase/enoyl-Coenzyme A hydratase (trifunctional protein), alpha subunit

Calculated MW:

83 kDa

Observed MW:

79 kDa

Purification Method:

Protein G purification

CloneNo.:

3E9B1

Recommended Dilutions:

WB 1:500-1:2000

IHC 1:20-1:200

IF 1:50-1:500

Applications

Tested Applications:

IF/ICC, IHC, WB, ELISA

Cited Applications:

WB

Species Specificity:

human, mouse

Cited Species:

human, mouse

Note-IHC: suggested antigen retrieval with TE buffer pH 9.0; (*) Alternatively, antigen retrieval may be performed with citrate buffer pH 6.0

Positive Controls:

WB : A375 cells, HEK293 cells

IHC : human heart tissue, human liver tissue

IF : HepG2 cells,

Background Information

HADHA (Trifunctional enzyme subunit alpha, mitochondrial) is also named as HADH, 78 kDa gastrin-binding protein. It belongs to the enoyl-CoA hydratase/isomerase family in the N-terminal section and the 3-hydroxyacyl-CoA dehydrogenase family in the central section. It harbors the 3-hydroxyacyl-CoA dehydrogenase and enoyl-CoA hydratase activities. Defects in HADHA are a cause of trifunctional protein deficiency (TFP deficiency) and long-chain 3-hydroxyacyl-CoA dehydrogenase deficiency (LCHAD deficiency) and maternal acute fatty liver of pregnancy (AFLP).

Notable Publications

Author	Pubmed ID	Journal	Application
Muna Al-Habsi	36302005	Science	WB
Xiaomei Zhu	35517767	RSC Adv	WB
Yanwei Du	25044461	Proteomics	WB

Storage

Storage:

Store at -20°C. Stable for one year after shipment.

Storage Buffer:

PBS with 0.02% sodium azide and 50% glycerol pH 7.3.

Aliquoting is unnecessary for -20°C storage

For technical support and original validation data for this product please contact:

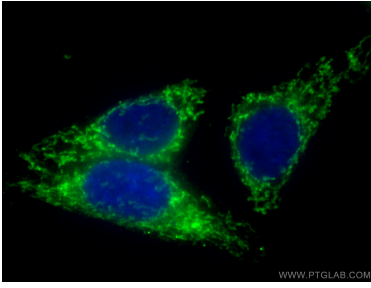
T: 4006900926

E: Proteintech-CN@ptglab.com

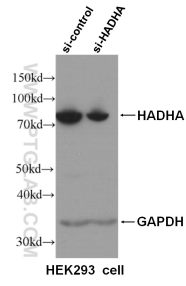
W: ptgcn.com

This product is exclusively available under Proteintech Group brand and is not available to purchase from any other manufacturer.

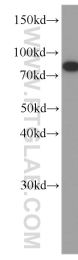
Selected Validation Data



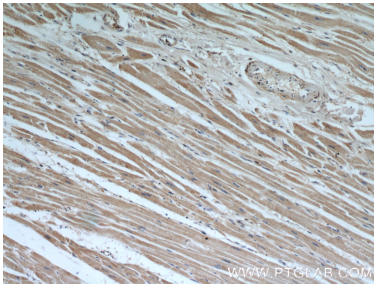
Immunofluorescent analysis of (4% PFA) fixed HepG2 cells using 60250-1-Ig (HADHA antibody) at dilution of 1:100 and CoraLite488-Conjugated AffiniPure Goat Anti-Mouse IgG(H+L).



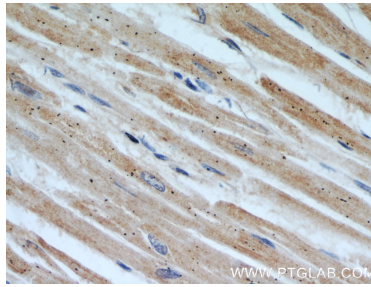
WB result of HADHA specific antibody (60250-1-Ig, 1:4000) with si-control and si-HADHA transfected HEK293 cells.



A375 cells were subjected to SDS PAGE followed by western blot with 60250-1-Ig (HADHA antibody) at dilution of 1:1000 incubated at room temperature for 1.5 hours.



Immunohistochemical analysis of paraffin-embedded human heart using 60250-1-Ig(HADHA antibody) at dilution of 1:50 (under 10x lens).



Immunohistochemical analysis of paraffin-embedded human heart using 60250-1-Ig(HADHA antibody) at dilution of 1:50 (under 40x lens).