

For Research Use Only

GRP94 Monoclonal antibody, PBS Only (Detector)



Catalog Number: 60012-1-PBS

Basic Information

Catalog Number:

60012-1-PBS

Size:

1mg/ml

Source:

Mouse

Isotype:

IgM

Immunogen Catalog Number:

AG1439

GenBank Accession Number:

BC009195

GeneID (NCBI):

7184

UNIPROT ID:

P14625

Full Name:

heat shock protein 90kDa beta (Grp94), member 1

Calculated MW:

96 kDa

Observed MW:

95 kDa

Purification Method:

Caprylic acid/ammonium sulfate precipitation

CloneNo.:

1H10B7

Applications

Tested Applications:

WB, IF, FC, IHC, Sandwich ELISA, Indirect ELISA

Species Specificity:

human, mouse, rat

Background Information

HSP90 proteins are highly conserved molecular chaperones, which normally associate with other cochaperones and play important roles in folding newly synthesized proteins or stabilizing and refolding denatured proteins after stress. HSP90b1 (GP96 or GRP94) is an endoplasmic reticulum paralogue of the cytosolic HSP90. As a major ER chaperone to mediate the UPR and a master chaperone for Toll-like receptors (TLRs), HSP90b1 chaperones peptides to MHC class I molecules of dendritic cells and other antigen-presenting cells, as well as facilitating the assembly of immunoglobulin. The protein is also involved in many other bio-processes. This antibody was generated against the N-terminal region of full-length HSP90b1.

Storage

Storage:

Store at -80°C.

Storage Buffer:

100% PBS pH 7.3

For technical support and original validation data for this product please contact:

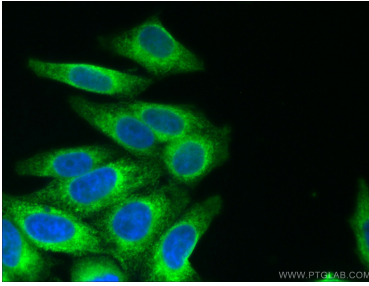
T: 4006900926

E: Proteintech-CN@ptglab.com

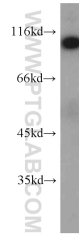
W: ptgcn.com

This product is exclusively available under Proteintech Group brand and is not available to purchase from any other manufacturer.

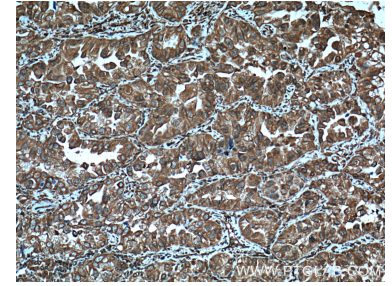
Selected Validation Data



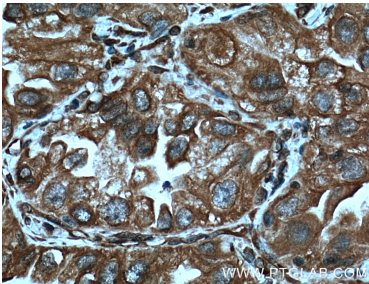
Immunofluorescent analysis of (4% PFA) fixed HepG2 cells using 60012-1-Ig (GRP94 antibody) at dilution of 1:200 and CoraLite488-Conjugated AffiniPure Goat Anti-Mouse IgG(H+L). This data was developed using the same antibody clone with 60012-1-PBS in a different storage buffer formulation.



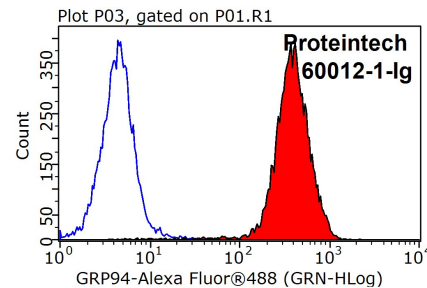
human heart tissue were subjected to SDS PAGE followed by western blot with 60012-1-Ig (HSP90B1 antibody) at dilution of 1:1000 incubated at room temperature for 1.5 hours. This data was developed using the same antibody clone with 60012-1-PBS in a different storage buffer formulation.



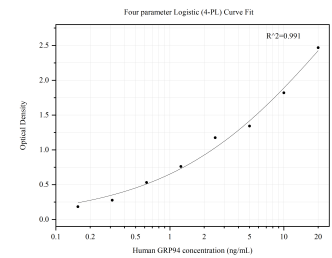
Immunohistochemical analysis of paraffin-embedded human lung cancer tissue slide using 60012-1-Ig (GRP94 Antibody) at dilution of 1:200 (under 10x lens). Heat mediated antigen retrieval with Tris-EDTA buffer (pH 9.0). This data was developed using the same antibody clone with 60012-1-PBS in a different storage buffer formulation.



Immunohistochemical analysis of paraffin-embedded human lung cancer tissue slide using 60012-1-Ig (GRP94 Antibody) at dilution of 1:200 (under 40x lens). Heat mediated antigen retrieval with Tris-EDTA buffer (pH 9.0). This data was developed using the same antibody clone with 60012-1-PBS in a different storage buffer formulation.



1X10⁶ HeLa cells were stained with 0.2ug GRP94 antibody (60012-1-Ig, red) and control antibody (blue). Fixed with 90% MeOH blocked with 3% BSA (30 min). Alexa Fluor 488-conjugated AffiniPure Goat Anti-Mouse IgG(H+L) with dilution 1:1000. This data was developed using the same antibody clone with 60012-1-PBS in a different storage buffer formulation.



Sandwich ELISA standard curve of MP50013-1, GRP94 Monoclonal Matched Antibody Pair - BSA and Azide free. Capture antibody: 60012-2-PBS. Detection antibody: HRP-conjugated 60012-1-PBS. Standard: Ag1439. Range: 0.156-20 ng/mL.