

For Research Use Only

Phospho-RB1 (Ser807/811) Polyclonal antibody



Catalog Number: 30376-1-AP

1 Publications

Basic Information

Catalog Number:

30376-1-AP

Size:

500 µg/ml

Source:

Rabbit

Isotype:

IgG

GenBank Accession Number:

BC039060

GeneID (NCBI):

5925

UNIPROT ID:

P06400

Full Name:

retinoblastoma 1

Calculated MW:

928 aa, 106 kDa

Observed MW:

110 kDa

Purification Method:

Antigen affinity purification

Recommended Dilutions:

WB 1:2000-1:10000

Applications

Tested Applications:

WB, ELISA

Cited Applications:

WB

Species Specificity:

Human

Cited Species:

human

Positive Controls:

WB : Calyculin A treated Jurkat cells, Jurkat cells

Background Information

RB1, also named as pp110, pRb and p105 Rb, belongs to the retinoblastoma protein (RB) family. Phosphorylation and dephosphorylation of RB1 is well known to be a key regulator in cell cycle progression in cancer cells. Phosphorylation of RB1 at multiple S/T residues, first by cyclin D-dependent kinases and subsequently by cyclin E-CDK2 in later G1 phase, completely inactivates RB1, enabling the release of E2F from RB1 complexes and activation of E2F-mediated transcription. Monomethylation at Lys810 by SMYD2 enhances phosphorylation at Ser807 and Ser811, and promotes cell cycle progression. (PMID: 22787429, PMID: 21115810, PMID: 32344731)

Notable Publications

Author	Pubmed ID	Journal	Application
Yunqing Sun	38397907	Biomedicines	WB

Storage

Storage:

Store at -20°C. Stable for one year after shipment.

Storage Buffer:

PBS with 0.02% sodium azide and 50% glycerol pH 7.3.

Aliquoting is unnecessary for -20°C storage

For technical support and original validation data for this product please contact:

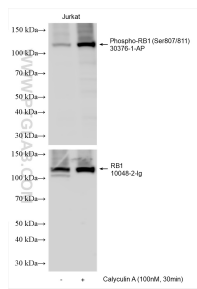
T: 4006900926

E: Proteintech-CN@ptglab.com

W: ptgcn.com

This product is exclusively available under Proteintech Group brand and is not available to purchase from any other manufacturer.

Selected Validation Data



Non-treated and Calyculin A treated Jurkat cells were subjected to SDS PAGE followed by western blot with 30376-1-AP (Phospho-RB1 (Ser807/811) antibody) at dilution of 1:5000 incubated at room temperature for 1.5 hours. The membrane was stripped and re-blotted with RB1 antibody (10048-2-Ig) subsequently.