

For Research Use Only

# KIF2C Polyclonal antibody

Catalog Number: 28372-1-AP

5 Publications



## Basic Information

Catalog Number:

28372-1-AP

Size:

600 µg/ml

Source:

Rabbit

Isotype:

IgG

Immunogen Catalog Number:

AG29009

GenBank Accession Number:

BC014924

GeneID (NCBI):

11004

UNIPROT ID:

Q99661

Full Name:

kinesin family member 2C

Calculated MW:

725 aa, 81 kDa

Observed MW:

80 kDa

Purification Method:

Antigen affinity purification

Recommended Dilutions:

WB 1:1000-1:4000

IHC 1:50-1:500

## Applications

Tested Applications:

IHC, WB, ELISA

Cited Applications:

IHC, WB

Species Specificity:

Human, mouse, rat

Cited Species:

human

**Note-IHC: suggested antigen retrieval with TE buffer pH 9.0; (\*) Alternatively, antigen retrieval may be performed with citrate buffer pH 6.0**

Positive Controls:

WB : DU 145 cells, PC-3 cells, mouse testis, rat testis

IHC : mouse testis tissue,

## Background Information

### Notable Publications

Author	Pubmed ID	Journal	Application
Bixi Zhang	36504885	Am J Cancer Res	WB,IHC
Xiuyuan Zhang	35685442	Front Genet	IHC
Liang Zhao	32355537	Am J Transl Res	IHC

## Storage

Storage:

Store at -20°C. Stable for one year after shipment.

Storage Buffer:

PBS with 0.02% sodium azide and 50% glycerol pH 7.3.

Aliquoting is unnecessary for -20°C storage

For technical support and original validation data for this product please contact:

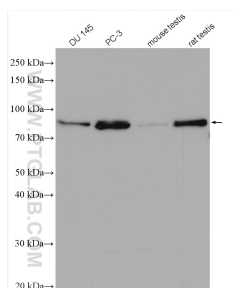
T: 4006900926

E: Proteintech-CN@ptglab.com

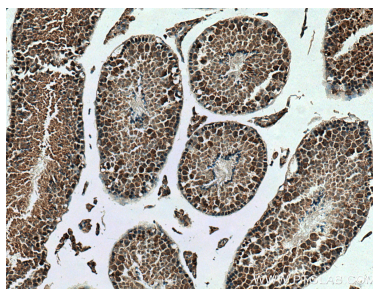
W: ptgcn.com

This product is exclusively available under Proteintech Group brand and is not available to purchase from any other manufacturer.

## Selected Validation Data



Various lysates were subjected to SDS PAGE followed by western blot with 28372-1-AP (KIF2C antibody) at dilution of 1:2000 incubated at room temperature for 1.5 hours.



Immunohistochemical analysis of paraffin-embedded mouse testis tissue slide using 28372-1-AP (KIF2C antibody) at dilution of 1:200 (under 10x lens). Heat mediated antigen retrieval with Tris-EDTA buffer (pH 9.0).