

For Research Use Only

# ADRB1 Polyclonal antibody

Catalog Number: 28323-1-AP **3 Publications**



## Basic Information

<b>Catalog Number:</b> 28323-1-AP	<b>GenBank Accession Number:</b> NM_000684	<b>Purification Method:</b> Antigen affinity purification
<b>Size:</b> 650 µg/ml	<b>GeneID (NCBI):</b> 153	<b>Recommended Dilutions:</b> WB 1:1000-1:4000
<b>Source:</b> Rabbit	<b>UNIPROT ID:</b> P08588	
<b>Isotype:</b> IgG	<b>Full Name:</b> adrenergic, beta-1-, receptor	
<b>Immunogen Catalog Number:</b> AG28223	<b>Calculated MW:</b> 51 kDa	
	<b>Observed MW:</b> 49 kDa	

## Applications

<b>Tested Applications:</b> WB, ELISA	<b>Positive Controls:</b> WB : mouse heart tissue, rat heart tissue
<b>Cited Applications:</b> WB	
<b>Species Specificity:</b> Human, mouse, rat	
<b>Cited Species:</b> human, rat, mouse	

## Background Information

ADRB1 (adrenergic receptor beta 1), a member of the G protein-coupled receptor (GPCR) superfamily, responds to catecholamine stimulation. In the heart, ADRB1 is the predominant subtype expressed and mediate increases in inotropy and chronotropy when stimulated. ADRB1 mediates a wide range of cardiovascular physiological responses and has been of great interest to researchers as a therapeutic target for cardiovascular diseases. Moreover, there are three subtypes of ADRBs (ADRB1, ADRB2 and ADRB3) encoded by three separate genes (PMID:16636683; 33372534; 33593484).

## Notable Publications

Author	Pubmed ID	Journal	Application
Xingcheng Lin	37927415	Oncol Lett	WB
Wanyu Tu	37783262	Brain Res	WB
Hao-Kun Xu	37680481	iScience	WB

## Storage

**Storage:**  
Store at -20°C. Stable for one year after shipment.  
**Storage Buffer:**  
PBS with 0.02% sodium azide and 50% glycerol pH 7.3.  
Aliquoting is unnecessary for -20°C storage

For technical support and original validation data for this product please contact:

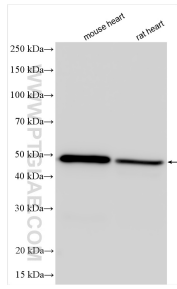
T: 4006900926

E: [Proteintech-CN@ptglab.com](mailto:Proteintech-CN@ptglab.com)

W: [ptgcn.com](http://ptgcn.com)

**This product is exclusively available under Proteintech Group brand and is not available to purchase from any other manufacturer.**

## Selected Validation Data



Various lysates were subjected to SDS PAGE followed by western blot with 28323-1-AP (ADRB1 antibody) at dilution of 1:2000 incubated at room temperature for 1.5 hours.