

For Research Use Only

# KL Polyclonal antibody

Catalog Number: 28100-1-AP **13 Publications**



## Basic Information

**Catalog Number:**

28100-1-AP

**Size:**

800 µg/ml

**Source:**

Rabbit

**Isotype:**

IgG

**Immunogen Catalog Number:**

AG27759

**GenBank Accession Number:**

NM\_004795

**GeneID (NCBI):**

9365

**UNIPROT ID:**

Q9UEF7

**Full Name:**

klotho

**Calculated MW:**

116 kDa

**Observed MW:**

62 kDa, 130 kDa

**Purification Method:**

Antigen affinity purification

**Recommended Dilutions:**

WB 1:500-1:2000

IP 0.5-4.0 µg for 1.0-3.0 mg of total protein lysate

IHC 1:50-1:500

## Applications

**Tested Applications:**

IHC, IP, WB, ELISA

**Cited Applications:**

IHC, WB

**Species Specificity:**

Human, Mouse, Rat

**Cited Species:**

human, rat, mouse

**Note-IHC: suggested antigen retrieval with TE buffer pH 9.0; (\*) Alternatively, antigen retrieval may be performed with citrate buffer pH 6.0**

**Positive Controls:**

WB : mouse kidney tissue, rat kidney tissue

IP : mouse kidney tissue,

IHC : human kidney tissue, mouse brain tissue

## Background Information

### Notable Publications

Author	Pubmed ID	Journal	Application
Li Lin	36325267	Genet Res (Camb)	WB
Shengnan Zhou	36277690	Front Endocrinol (Lausanne)	WB
Hao Meng	34807408	Hum Cell	WB

## Storage

**Storage:**

Store at -20°C. Stable for one year after shipment.

**Storage Buffer:**

PBS with 0.02% sodium azide and 50% glycerol pH 7.3.

Aliquoting is unnecessary for -20°C storage

For technical support and original validation data for this product please contact:

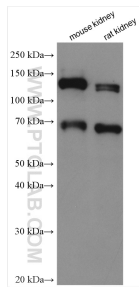
T: 4006900926

E: Proteintech-CN@ptglab.com

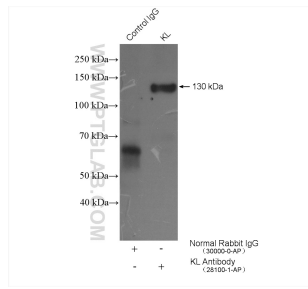
W: ptgcn.com

**This product is exclusively available under Proteintech Group brand and is not available to purchase from any other manufacturer.**

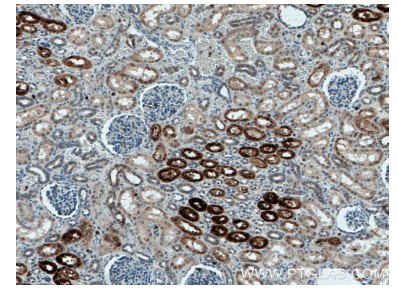
## Selected Validation Data



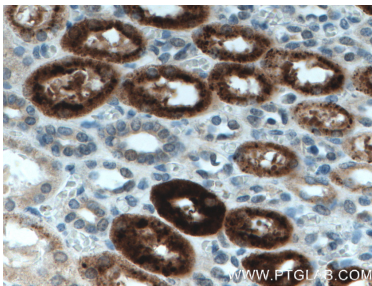
Various lysates were subjected to SDS PAGE followed by western blot with 28100-1-AP (KL antibody) at dilution of 1:1000 incubated at room temperature for 1.5 hours.



IP result of anti-KL (IP:28100-1-AP, 4ug; Detection:28100-1-AP 1:300) with mouse kidney tissue lysate 4000 ug.



Immunohistochemical analysis of paraffin-embedded human kidney tissue slide using 28100-1-AP (KL antibody) at dilution of 1:200 (under 10x lens. Heat mediated antigen retrieval with Tris-EDTA buffer (pH 9.0).



Immunohistochemical analysis of paraffin-embedded human kidney tissue slide using 28100-1-AP (KL antibody) at dilution of 1:200 (under 40x lens. Heat mediated antigen retrieval with Tris-EDTA buffer (pH 9.0).