

# SAP30 Polyclonal antibody

Catalog Number: 27679-1-AP

2 Publications

## Basic Information

**Catalog Number:**

27679-1-AP

**Size:**

600 µg/ml

**Source:**

Rabbit

**Isotype:**

IgG

**Immunogen Catalog Number:**

AG26516

**GenBank Accession Number:**

BC016757

**GeneID (NCBI):**

8819

**UNIPROT ID:**

O75446

**Full Name:**

Sin3A-associated protein, 30kDa

**Calculated MW:**

220 aa, 23 kDa

**Observed MW:**

23-28 kDa

**Purification Method:**

Antigen affinity purification

**Recommended Dilutions:**

WB 1:500-1:2000

## Applications

**Tested Applications:**

WB, ELISA

**Cited Applications:**

WB, IF

**Species Specificity:**

Human

**Cited Species:**

human

**Positive Controls:**

WB : A549 cells, HL-60 cells, K-562 cells

## Background Information

SAP30, also named as Sin3 corepressor complex subunit SAP30, is a 220 amino acid protein, which is expressed in all tissues tested with highest levels in pancreas, ovary, PBL, spleen and thymus. SAP30 is involved in the functional recruitment of the Sin3-histone deacetylase complex (HDAC) to a specific subset of N-CoR corepressor complexes.

## Notable Publications

| Author             | Pubmed ID | Journal     | Application |
|--------------------|-----------|-------------|-------------|
| Sandra Ruiz García | 31558434  | Development | IF          |
| Kazuhiro Fukumura  | 38065098  | Cell Rep    | WB          |

## Storage

**Storage:**

Store at -20°C. Stable for one year after shipment.

**Storage Buffer:**

PBS with 0.02% sodium azide and 50% glycerol pH 7.3.

Aliquoting is unnecessary for -20°C storage

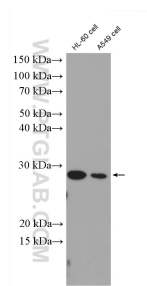
For technical support and original validation data for this product please contact:

T: 4006900926

E: [Proteintech-CN@ptglab.com](mailto:Proteintech-CN@ptglab.com)W: [ptgcn.com](http://ptgcn.com)

This product is exclusively available under Proteintech Group brand and is not available to purchase from any other manufacturer.

## Selected Validation Data



A549 cells were subjected to SDS PAGE followed by western blot with 27679-1-AP (SAP30 antibody) at dilution of 1:1000 incubated at room temperature for 1.5 hours.