

For Research Use Only

FGD2 Polyclonal antibody

Catalog Number: 27068-1-AP



Basic Information

Catalog Number:

27068-1-AP

Size:

1000 µg/ml

Source:

Rabbit

Isotype:

IgG

Immunogen Catalog Number:

AG25782

GenBank Accession Number:

BC023645

GeneID (NCBI):

221472

UNIPROT ID:

Q7Z6J4

Full Name:

FYVE, RhoGEF and PH domain containing 2

Calculated MW:

655 aa, 75 kDa

Observed MW:

75 kDa

Purification Method:

Antigen affinity purification

Recommended Dilutions:

WB 1:500-1:2000

Applications

Tested Applications:

WB, ELISA

Species Specificity:

human

Positive Controls:

WB: Raji cells,

Background Information

Storage

Storage:

Store at -20°C. Stable for one year after shipment.

Storage Buffer:

PBS with 0.02% sodium azide and 50% glycerol pH 7.3.

Aliquoting is unnecessary for -20°C storage

For technical support and original validation data for this product please contact:

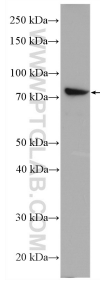
T: 4006900926

E: Proteintech-CN@ptglab.com

W: ptgcn.com

This product is exclusively available under Proteintech Group brand and is not available to purchase from any other manufacturer.

Selected Validation Data



Raji cells were subjected to SDS PAGE followed by western blot with 27068-1-AP (FGD2 antibody) at dilution of 1:1000 incubated at room temperature for 1.5 hours.