

SLC7A11/xCT Polyclonal antibody

Catalog Number: 26864-1-AP

Featured Product

270 Publications

Basic Information

Catalog Number:

26864-1-AP

Size:

500 µg/ml

Source:

Rabbit

Isotype:

IgG

Immunogen Catalog Number:

AG25431

GenBank Accession Number:

BC012087

GeneID (NCBI):

23657

UNIPROT ID:

Q9UPY5

Full Name:

solute carrier family 7, (cationic amino acid transporter, y+ system) member 11

Calculated MW:

55 kDa

Observed MW:

55 kDa, 35-40 kDa

Purification Method:

Antigen affinity purification

Recommended Dilutions:

WB 1:500-1:2000

IP 0.5-4.0 µg for 1.0-3.0 mg of total protein lysate

IHC 1:50-1:500

Applications

Tested Applications:

FC, IHC, IP, WB, ELISA

Cited Applications:

WB, IP, IF, FC, RIP, IHC, CoIP

Species Specificity:

human

Cited Species:

human, goat, chicken

Note-IHC: suggested antigen retrieval with TE buffer pH 9.0; (*) Alternatively, antigen retrieval may be performed with citrate buffer pH 6.0

Positive Controls:

WB : A549 cells, U2OS cells, BxPC-3 cells, HepG2 cells

IP : A549 cells, HepG2 cells

IHC : human renal cell carcinoma tissue,

Background Information

SLC7A11 (also known as xCT) is a membrane transporter involved in the uptake of cystine. It promotes glutathione synthesis through the uptake of cystine and the concomitant release of glutamate. This, in turn, protects cells from oxidative stress, maintains cellular redox balance, and prevents cell death induced by lipid peroxidation. SLC7A11 has been identified as a potential target for cancer therapeutics. It is overexpressed in multiple malignant tumors and is closely associated with the growth, prognosis, metastasis, and treatment response of various cancers including lung cancer. 26864-1-AP recognizes the 55 kDa and 35-40 kDa protein similar to the paper published (PMID: 32188872, 19156441).

Notable Publications

Author	Pubmed ID	Journal	Application
Yanan Zhao	36166594	J Agric Food Chem	WB
Ben Li	36290297	Biology (Basel)	WB
Shiao Tong	36156371	Transl Oncol	WB

Storage

Storage:

Store at -20°C. Stable for one year after shipment.

Storage Buffer:

PBS with 0.02% sodium azide and 50% glycerol pH 7.3.

Aliquoting is unnecessary for -20°C storage

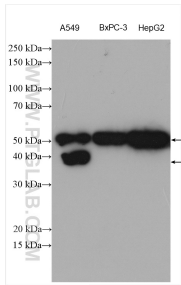
For technical support and original validation data for this product please contact:

T: 4006900926

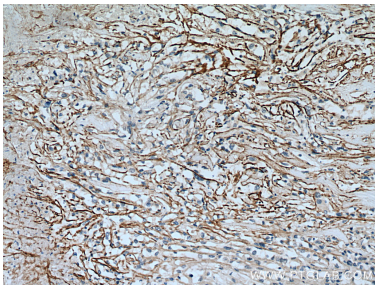
E: Proteintech-CN@ptglab.comW: ptgcn.com

This product is exclusively available under Proteintech Group brand and is not available to purchase from any other manufacturer.

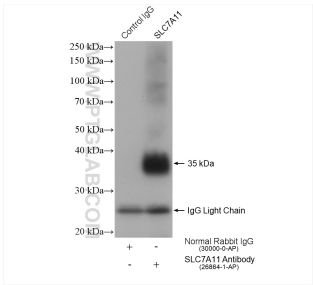
Selected Validation Data



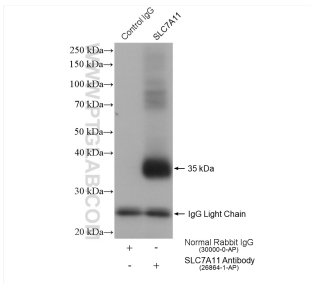
Various lysates were subjected to SDS PAGE followed by western blot with 26864-1-AP (SLC7A11/xCT antibody) at dilution of 1:1000 incubated at room temperature for 1.5 hours.



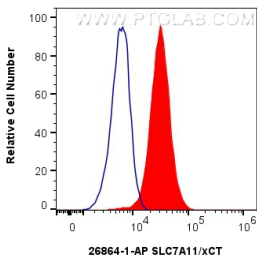
Immunohistochemical analysis of paraffin-embedded human renal cell carcinoma tissue slide using 26864-1-AP (SLC7A11/xCT antibody) at dilution of 1:200 (under 10x lens). Heat mediated antigen retrieval with Tris-EDTA buffer (pH 9.0).



IP result of anti-SLC7A11/xCT (IP:26864-1-AP, 4ug; Detection:26864-1-AP 1:800) with A549 cells lysate 960 ug.



IP result of anti-SLC7A11/xCT (IP:26864-1-AP, 4ug; Detection:26864-1-AP 1:800) with HepG2 cells lysate 1720 ug.



1X10⁶ HepG2 cells were intracellularly stained with 0.8 ug Anti-Human SLC7A11/xCT (26864-1-AP) and CoraLite® 488-Conjugated AffiniPure Goat Anti-Rabbit IgG(H+L) at dilution 1:1000 (red), or 0.8 ug Isotype Control. Cells were fixed with 4% PFA and permeabilized with Flow Cytometry Perm Buffer (PF00011-C).