

For Research Use Only

TRAF2 Polyclonal antibody

Catalog Number: 26846-1-AP

Featured Product

27 Publications



Basic Information

Catalog Number:

26846-1-AP

Size:

450 µg/ml

Source:

Rabbit

Isotype:

IgG

Immunogen Catalog Number:

AG25387

GenBank Accession Number:

BC032410

GeneID (NCBI):

7186

UNIPROT ID:

Q12933

Full Name:

TNF receptor-associated factor 2

Calculated MW:

56 kDa

Observed MW:

53 kDa

Purification Method:

Antigen affinity purification

Recommended Dilutions:

WB 1:500-1:2000

IHC 1:50-1:500

IF 1:50-1:500

Applications

Tested Applications:

IF/ICC, IHC, WB, ELISA

Cited Applications:

IF, IHC, IP, WB

Species Specificity:

human

Cited Species:

human, rat, mouse, bovine

Note-IHC: suggested antigen retrieval with TE buffer pH 9.0; (*) Alternatively, antigen retrieval may be performed with citrate buffer pH 6.0

Positive Controls:

WB : HepG2 cells, human testis tissue, HeLa cells

IHC : human liver cancer tissue, human kidney tissue

IF : A549 cells, HeLa cells, HUVEC cells

Background Information

Notable Publications

Author	Pubmed ID	Journal	Application
Li Ma	36056472	Int Wound J	WB
Boxun Zhang	33224253	Evid Based Complement Alternat Med	WB
Yaochen Cao	35635602	Cell Biol Toxicol	WB

Storage

Storage:

Store at -20°C. Stable for one year after shipment.

Storage Buffer:

PBS with 0.02% sodium azide and 50% glycerol pH 7.3.

Aliquoting is unnecessary for -20°C storage

For technical support and original validation data for this product please contact:

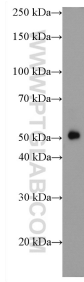
T: 4006900926

E: Proteintech-CN@ptglab.com

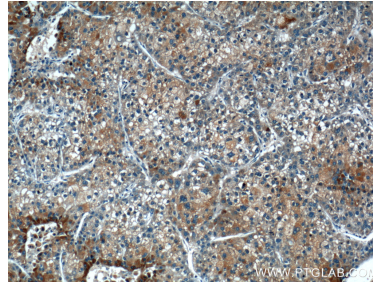
W: ptgcn.com

This product is exclusively available under Proteintech Group brand and is not available to purchase from any other manufacturer.

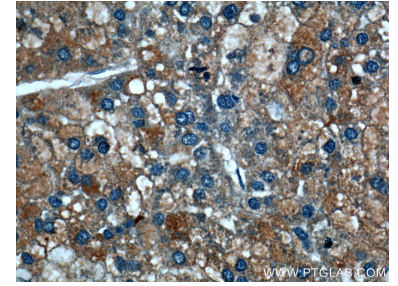
Selected Validation Data



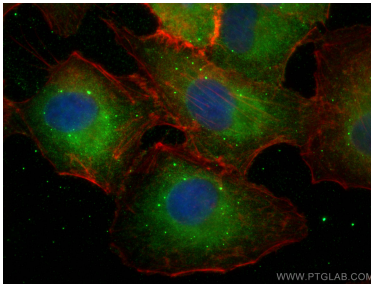
HepG2 cells were subjected to SDS PAGE followed by western blot with 26846-1-AP (TRAF2 antibody) at dilution of 1:1000 incubated at room temperature for 1.5 hours.



Immunohistochemical analysis of paraffin-embedded human liver cancer tissue slide using 26846-1-AP (TRAF2 Antibody) at dilution of 1:200 (under 10x lens).



Immunohistochemical analysis of paraffin-embedded human liver cancer tissue slide using 26846-1-AP (TRAF2 Antibody) at dilution of 1:200 (under 40x lens).



Immunofluorescent analysis of (4% PFA) fixed A549 cells using TRAF2 antibody (26846-1-AP) at dilution of 1:200 and CoralLite@488-Conjugated AffiniPure Goat Anti-Rabbit IgG(H+L), CL594-Phalloidin (red).