

For Research Use Only

TUBGCP2 Polyclonal antibody

Catalog Number: 25856-1-AP **1 Publications**



Basic Information

Catalog Number:

25856-1-AP

Size:

400 µg/ml

Source:

Rabbit

Isotype:

IgG

Immunogen Catalog Number:

AG23066

GenBank Accession Number:

BC093770

GeneID (NCBI):

10844

UNIPROT ID:

Q9BSJ2

Full Name:

tubulin, gamma complex associated protein 2

Calculated MW:

902 aa, 103 kDa

Observed MW:

103 kDa

Purification Method:

Antigen affinity purification

Recommended Dilutions:

WB 1:500-1:1000

IP 0.5-4.0 µg for 1.0-3.0 mg of total protein lysate

IHC 1:50-1:500

Applications

Tested Applications:

IHC, IP, WB, ELISA

Cited Applications:

IF

Species Specificity:

human, mouse

Cited Species:

human

Note-IHC: suggested antigen retrieval with TE buffer pH 9.0; (*) Alternatively, antigen retrieval may be performed with citrate buffer pH 6.0

Positive Controls:

WB : HEK-293 cells, HeLa cells, U2OS cells

IP : HeLa cells,

IHC : mouse testis tissue,

Background Information

TUBGCP2 (tubulin-gamma-complex-associated protein 2) s TUBGCP2 is a core component of the g-TuRC nucleation complex (PMID: 3345861). Pathogenic variants in TUBGCP2 cause an autosomal recessive neurodevelopmental trait consisting of a neuronal migration disorder (PMID: 31630790).

Notable Publications

| Author | Pubmed ID | Journal | Application |
|-----------------|-----------|---------------------|-------------|
| Franziska Woerz | 38122899 | Mol Cell Proteomics | IF |

Storage

Storage:

Store at -20°C. Stable for one year after shipment.

Storage Buffer:

PBS with 0.02% sodium azide and 50% glycerol pH 7.3.

Aliquoting is unnecessary for -20°C storage

For technical support and original validation data for this product please contact:

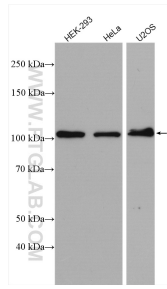
T: 4006900926

E: Proteintech-CN@ptglab.com

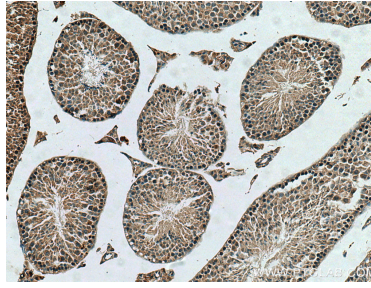
W: ptgcn.com

This product is exclusively available under Proteintech Group brand and is not available to purchase from any other manufacturer.

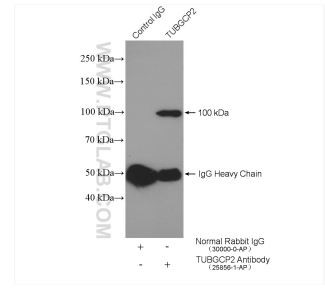
Selected Validation Data



Various lysates were subjected to SDS PAGE followed by western blot with 25856-1-AP (TUBGCP2 antibody) at dilution of 1:600 incubated at room temperature for 1.5 hours.



Immunohistochemical analysis of paraffin-embedded mouse testis tissue slide using 25856-1-AP (TUBGCP2 antibody) at dilution of 1:200 (under 10x lens). Heat mediated antigen retrieval with Tris-EDTA buffer (pH 9.0).



IP result of anti-TUBGCP2 (IP:25856-1-AP, 4ug; Detection:25856-1-AP 1:500) with HeLa cells lysate 3920 ug.