

# LRP2BP Polyclonal antibody

Catalog Number: 25783-1-AP

## Basic Information

**Catalog Number:**

25783-1-AP

**Size:**

500 µg/ml

**Source:**

Rabbit

**Isotype:**

IgG

**Immunogen Catalog Number:**

AG22779

**GenBank Accession Number:**

BC152444

**GeneID (NCBI):**

55805

**UNIPROT ID:**

Q9P2M1

**Full Name:**

LRP2 binding protein

**Calculated MW:**

347 aa, 40 kDa

**Observed MW:**

45 kDa

**Purification Method:**

Antigen affinity purification

**Recommended Dilutions:**

WB 1:500-1:2000

IHC 1:50-1:500

## Applications

**Tested Applications:**

IHC, WB, ELISA

**Species Specificity:**

human, rat

**Note-IHC:** suggested antigen retrieval with **TE buffer pH 9.0; (\*)** Alternatively, antigen retrieval may be performed with **citrate buffer pH 6.0**

**Positive Controls:**

**WB:** A549 cells, Jurkat cells, rat lung tissue

**IHC:** human cerebellum tissue,

## Background Information

### Storage

**Storage:**

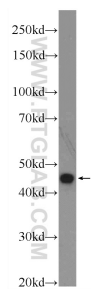
Store at -20°C. Stable for one year after shipment.

**Storage Buffer:**

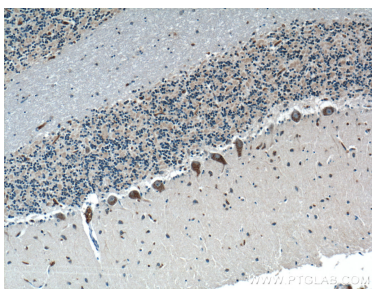
PBS with 0.02% sodium azide and 50% glycerol pH 7.3.

Aliquoting is unnecessary for -20°C storage

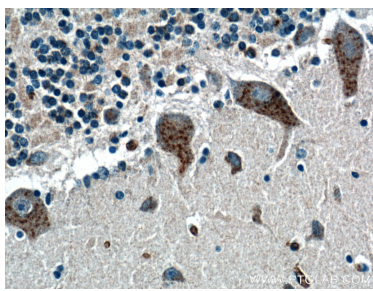
Selected Validation Data



A549 cells were subjected to SDS PAGE followed by western blot with 25783-1-AP (LRP2BP Antibody) at dilution of 1:1000 incubated at room temperature for 1.5 hours.



Immunohistochemical analysis of paraffin-embedded human cerebellum tissue slide using 25783-1-AP (LRP2BP antibody) at dilution of 1:200 (under 10x lens).



Immunohistochemical analysis of paraffin-embedded human cerebellum tissue slide using 25783-1-AP (LRP2BP antibody) at dilution of 1:200 (under 40x lens).